

# COL25A1 Polyclonal Antibody

Catalog # AP74007

## Product Information

---

<b>Application</b>	WB
<b>Primary Accession</b>	<a href="#">Q9BXS0</a>
<b>Reactivity</b>	Human, Mouse
<b>Host</b>	Rabbit
<b>Clonality</b>	Polyclonal
<b>Calculated MW</b>	64771

## Additional Information

---

<b>Gene ID</b>	84570
<b>Other Names</b>	COL25A1
<b>Dilution</b>	WB~~WB 1:500-2000, ELISA 1:10000-20000
<b>Format</b>	Liquid in PBS containing 50% glycerol, 0.5% BSA and 0.09% (W/V) sodium azide.
<b>Storage Conditions</b>	-20°C

## Protein Information

---

<b>Name</b>	COL25A1 ( <a href="#">HGNC:18603</a> )
<b>Function</b>	Inhibits fibrillization of amyloid-beta peptide during the elongation phase. Has also been shown to assemble amyloid fibrils into protease-resistant aggregates. Binds heparin.
<b>Cellular Location</b>	Membrane; Single-pass type II membrane protein. Note=After proteolytic cleavage, CLAC is secreted
<b>Tissue Location</b>	Expressed predominantly in brain. Deposited preferentially in primitive or neuritic amyloid plaques which are typical of Alzheimer disease.

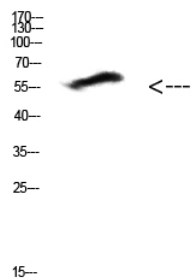
## Background

---

Inhibits fibrillization of amyloid-beta peptide during the elongation phase. Has also been shown to assemble amyloid fibrils into protease-resistant aggregates. Binds heparin.

## Images

---



Western Blot analysis of HEPG2 cells using Antibody diluted at 500. Secondary antibody was diluted at 1:20000

Please note: All products are 'FOR RESEARCH USE ONLY. NOT FOR USE IN DIAGNOSTIC OR THERAPEUTIC PROCEDURES'.