

# TMPO Polyclonal Antibody

Catalog # AP74013

## Product Information

---

<b>Application</b>	WB
<b>Primary Accession</b>	<a href="#">P42166</a> , <a href="#">P42167</a>
<b>Reactivity</b>	Human, Mouse, Rat
<b>Host</b>	Rabbit
<b>Clonality</b>	Polyclonal
<b>Calculated MW</b>	75492

## Additional Information

---

<b>Gene ID</b>	7112
<b>Other Names</b>	TMPO LAP2
<b>Dilution</b>	WB~~WB 1:500-2000, ELISA 1:10000-20000
<b>Format</b>	Liquid in PBS containing 50% glycerol, 0.5% BSA and 0.09% (W/V) sodium azide.
<b>Storage Conditions</b>	-20°C

## Protein Information

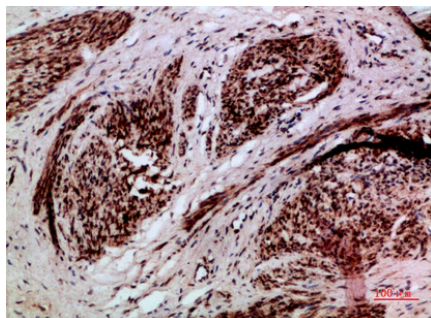
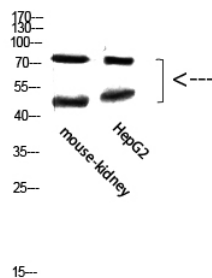
---

<b>Name</b>	TMPO
<b>Synonyms</b>	LAP2
<b>Function</b>	May be involved in the structural organization of the nucleus and in the post-mitotic nuclear assembly. Plays an important role, together with LMNA, in the nuclear anchorage of RB1.
<b>Cellular Location</b>	Nucleus. Chromosome. Note=Expressed diffusely throughout the nucleus
<b>Tissue Location</b>	Expressed in many tissues. Most abundant in adult thymus and fetal liver

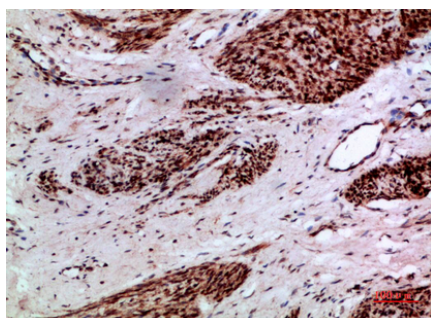
## Images

---

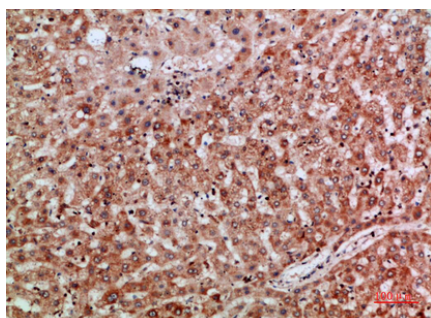
Western Blot analysis of mouse-kidney, hepg2 cells using Antibody diluted at 800. Secondary antibody was diluted at 1:20000



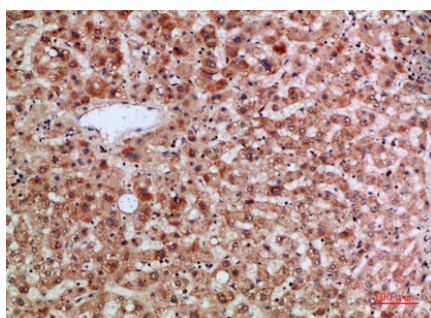
Immunohistochemical analysis of paraffin-embedded human-cervical-cancer, antibody was diluted at 1:200



Immunohistochemical analysis of paraffin-embedded human-cervical-cancer, antibody was diluted at 1:200



Immunohistochemical analysis of paraffin-embedded human-liver, antibody was diluted at 1:200



Immunohistochemical analysis of paraffin-embedded human-liver, antibody was diluted at 1:200

Please note: All products are 'FOR RESEARCH USE ONLY. NOT FOR USE IN DIAGNOSTIC OR THERAPEUTIC PROCEDURES'.