

CHID1 Polyclonal Antibody

Catalog # AP74014

Product Information

| | |
|--------------------------|------------------------|
| Application | WB |
| Primary Accession | Q9BWS9 |
| Reactivity | Human, Mouse, Rat |
| Host | Rabbit |
| Clonality | Polyclonal |
| Calculated MW | 44941 |

Additional Information

| | |
|---------------------------|---|
| Gene ID | 66005 |
| Other Names | CHID1 GL008 PSEC0104 SB139 |
| Dilution | WB~~WB 1:500-2000, ELISA 1:10000-20000 |
| Format | Liquid in PBS containing 50% glycerol, 0.5% BSA and 0.09% (W/V) sodium azide. |
| Storage Conditions | -20°C |

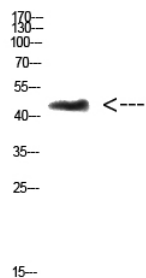
Protein Information

| | |
|--------------------------|---|
| Name | CHID1 |
| Function | Saccharide- and LPS-binding protein with possible roles in pathogen sensing and endotoxin neutralization. Ligand-binding specificity relates to the length of the oligosaccharides, with preference for chitotetraose (in vitro). |
| Cellular Location | Secreted. Lysosome |
| Tissue Location | Expressed in cells of monocytic, T, B and epithelial origin. |

Background

Saccharide- and LPS-binding protein with possible roles in pathogen sensing and endotoxin neutralization. Ligand-binding specificity relates to the length of the oligosaccharides, with preference for chitotetraose (in vitro).

Images



Western Blot analysis of 3T3 cells using Antibody diluted at 500. Secondary antibody was diluted at 1:20000

Please note: All products are 'FOR RESEARCH USE ONLY. NOT FOR USE IN DIAGNOSTIC OR THERAPEUTIC PROCEDURES'.