

# COL17A1 Polyclonal Antibody

Catalog # AP74015

## Product Information

---

|                          |                        |
|--------------------------|------------------------|
| <b>Application</b>       | WB, IF, ICC, E         |
| <b>Primary Accession</b> | <a href="#">Q9UMD9</a> |
| <b>Reactivity</b>        | Human, Rat, Mouse      |
| <b>Host</b>              | Rabbit                 |
| <b>Clonality</b>         | Polyclonal             |
| <b>Calculated MW</b>     | 150419                 |

## Additional Information

---

|                           |   |
|---------------------------|---|
| <b>Gene ID</b>            | 1308  |
| <b>Other Names</b>        | COL17A1 BP180 BPAG2   |
| <b>Dilution</b>           | WB~~WB 1:500-2000, ELISA 1:10000-20000 IF~~1:50~200 ICC~~N/A E~~N/A           |
| <b>Format</b>             | Liquid in PBS containing 50% glycerol, 0.5% BSA and 0.09% (W/V) sodium azide. |
| <b>Storage Conditions</b> | -20°C   |

## Protein Information

---

|                          |   |
|--------------------------|---|
| <b>Name</b>              | COL17A1   |
| <b>Synonyms</b>          | BP180, BPAG2  |
| <b>Function</b>          | May play a role in the integrity of hemidesmosome and the attachment of basal keratinocytes to the underlying basement membrane.  |
| <b>Cellular Location</b> | Cell junction, hemidesmosome. Membrane; Single-pass type II membrane protein. Note=Localized along the plasma membrane of the hemidesmosome [97 kDa linear IgA disease antigen]: Secreted, extracellular space, extracellular matrix, basement membrane Note=Localized in the lamina lucida beneath the hemidesmosomes  |
| <b>Tissue Location</b>   | Detected in skin (PubMed:8618013). In the cornea, it is detected in the epithelial basement membrane, the epithelial cells, and at a lower level in stromal cells (at protein level) (PubMed:25676728). Stratified squamous epithelia. Found in hemidesmosomes. Expressed in cornea, oral mucosa, esophagus, intestine, kidney collecting ducts, ureter, bladder, urethra and thymus but is absent in lung, blood vessels, skeletal muscle and nerves |

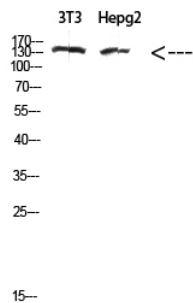
## Background

---

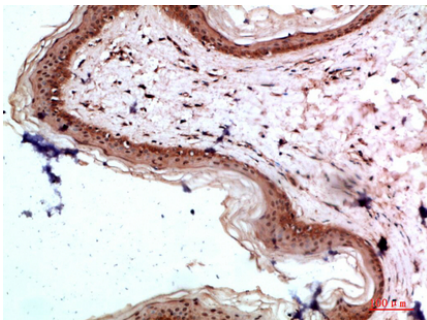
May play a role in the integrity of hemidesmosome and the attachment of basal keratinocytes to the underlying basement membrane.

## Images

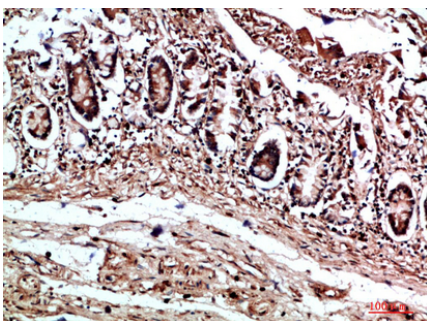
---



Western Blot analysis of 3T3, hepg2 cells using Antibody diluted at 500. Secondary antibody was diluted at 1:20000



Immunohistochemical analysis of paraffin-embedded human-skin, antibody was diluted at 1:200



Immunohistochemical analysis of paraffin-embedded human-colon, antibody was diluted at 1:200

Please note: All products are 'FOR RESEARCH USE ONLY. NOT FOR USE IN DIAGNOSTIC OR THERAPEUTIC PROCEDURES'.