

Pan myristoylation Polyclonal Antibody

Catalog # AP74017

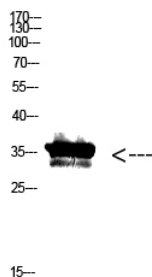
Product Information

Application	WB
Reactivity	All Species
Host	Rabbit
Clonality	Polyclonal

Additional Information

Dilution	WB~~WB 1:500-2000, ELISA 1:10000-20000
Format	Liquid in PBS containing 50% glycerol, 0.5% BSA and 0.09% (W/V) sodium azide.
Storage Conditions	-20°C

Images



Western Blot analysis of KB cells using Antibody diluted at 500. Secondary antibody was diluted at 1:20000

Please note: All products are 'FOR RESEARCH USE ONLY. NOT FOR USE IN DIAGNOSTIC OR THERAPEUTIC PROCEDURES'.