

# Pan myristoylation Polyclonal Antibody

Catalog # AP74018

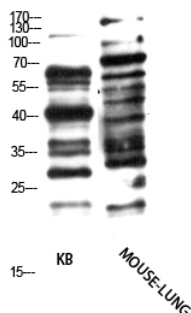
## Product Information

<b>Application</b>	WB
<b>Reactivity</b>	All Species
<b>Host</b>	Rabbit
<b>Clonality</b>	Polyclonal

## Additional Information

<b>Dilution</b>	WB~~WB 1:500-2000, ELISA 1:10000-20000
<b>Format</b>	Liquid in PBS containing 50% glycerol, 0.5% BSA and 0.09% (W/V) sodium azide.
<b>Storage Conditions</b>	-20°C

## Images



Western Blot analysis of KB, MOUSE-LUNG cells using Antibody diluted at 1000. Secondary antibody was diluted at 1:20000

Please note: All products are 'FOR RESEARCH USE ONLY. NOT FOR USE IN DIAGNOSTIC OR THERAPEUTIC PROCEDURES'.