

# WISP-3 Polyclonal Antibody

Catalog # AP74023

## Product Information

---

Application	WB
Primary Accession	<a href="#">O95389</a>
Reactivity	Human
Host	Rabbit
Clonality	Polyclonal
Calculated MW	39293

## Additional Information

---

Gene ID	8838
Other Names	WNT1-inducible-signaling pathway protein 3 (WISP-3) (CCN family member 6)
Dilution	WB~~WB 1:500-2000, ELISA 1:10000-20000
Format	Liquid in PBS containing 50% glycerol, 0.5% BSA and 0.09% (W/V) sodium azide.
Storage Conditions	-20°C

## Protein Information

---

Name	CCN6 ( <a href="#">HGNC:12771</a> )
Function	Plays a role in mitochondrial electron transport and mitochondrial respiration (PubMed: <a href="#">27252383</a> ). Through its regulation of the mitochondrial function may play a role in normal postnatal skeletal growth and cartilage homeostasis (PubMed: <a href="#">10471507</a> , PubMed: <a href="#">27252383</a> ).
Cellular Location	Secreted. Mitochondrion. Note=Associated with membranes.
Tissue Location	Predominant expression in adult kidney and testis and fetal kidney. Weaker expression found in placenta, ovary, prostate and small intestine (PubMed:10471507, PubMed:9843955). Also expressed in skeletally-derived cells such as synoviocytes and articular cartilage chondrocytes (PubMed:10471507).

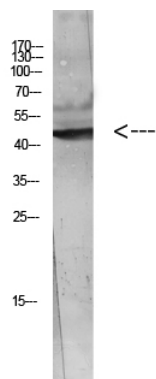
## Background

---

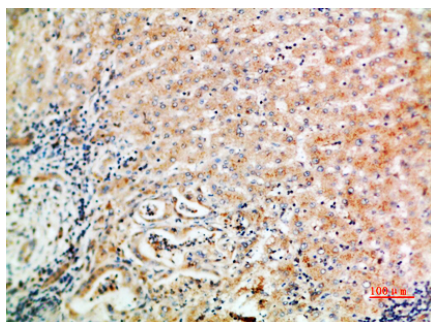
Appears to be required for normal postnatal skeletal growth and cartilage homeostasis.

## Images

---



Western blot analysis of Hela Cell Lysate using antibody.  
Secondary antibody was diluted at 1:20000



Immunohistochemical analysis of paraffin-embedded  
human-liver-cancer, antibody was diluted at 1:200

Please note: All products are 'FOR RESEARCH USE ONLY. NOT FOR USE IN DIAGNOSTIC OR THERAPEUTIC PROCEDURES'.