

DCT Polyclonal Antibody

Catalog # AP74032

Product Information

Application	WB, IHC-P
Primary Accession	P40126
Reactivity	Human, Rat, Mouse
Host	Rabbit
Clonality	Polyclonal
Calculated MW	59145

Additional Information

Gene ID	1638
Other Names	L-dopachrome tautomerase (DCT) (DT) (EC 5.3.3.12) (L-dopachrome Delta-isomerase) (Tyrosinase-related protein 2) (TRP-2) (TRP2)
Dilution	WB~~WB 1:500-2000,IHC-p 1:500-200, ELISA 1:10000-20000 IHC-P~~WB 1:500-2000,IHC-p 1:500-200, ELISA 1:10000-20000
Format	Liquid in PBS containing 50% glycerol, 0.5% BSA and 0.09% (W/V) sodium azide.
Storage Conditions	-20°C

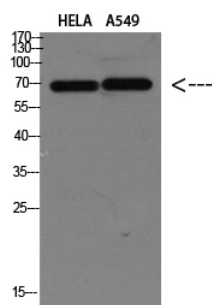
Protein Information

Name	DCT (HGNC:2709)
Synonyms	TYRP2
Function	Plays a role in melanin biosynthesis (PubMed: 33100333). Catalyzes the conversion of L-dopachrome into 5,6-dihydroxyindole-2- carboxylic acid (DHICA).
Cellular Location	Melanosome membrane; Single-pass type I membrane protein. Melanosome {ECO:0000250 UniProtKB:P29812}. Note=Proper trafficking to melanosome is regulated by SGSM2, ANKRD27, RAB9A, RAB32 and RAB38 {ECO:0000250 UniProtKB:P29812}

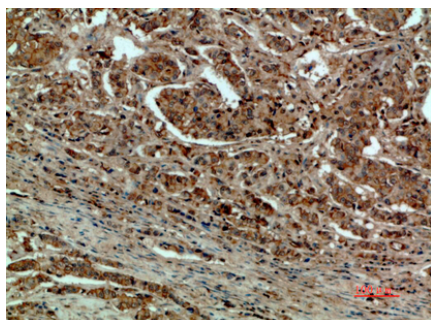
Background

Catalyzes the conversion of L-dopachrome into 5,6- dihydroxyindole-2-carboxylic acid (DHICA) (PubMed:[8306979](#)). Involved in regulating eumelanin and phaeomelanin levels.

Images



Western blot analysis of HELA A549 Cell Lysate, antibody was diluted at 1:1000. Secondary antibody was diluted at 1:20000



Immunohistochemical analysis of paraffin-embedded human-breast-cancer, antibody was diluted at 1:200

Please note: All products are 'FOR RESEARCH USE ONLY. NOT FOR USE IN DIAGNOSTIC OR THERAPEUTIC PROCEDURES'.