

# CSNK1E Antibody (C-term)

Purified Rabbit Polyclonal Antibody (Pab)  
Catalog # AP7403a

## Product Information

---

<b>Application</b>	IHC-P, WB, E
<b>Primary Accession</b>	<a href="#">P49674</a>
<b>Reactivity</b>	Human
<b>Host</b>	Rabbit
<b>Clonality</b>	Polyclonal
<b>Isotype</b>	Rabbit IgG
<b>Antigen Region</b>	331-360

## Additional Information

---

<b>Other Names</b>	Casein kinase I isoform epsilon, CKI-epsilon, CKIe, CSNK1E
<b>Target/Specificity</b>	This CSNK1E antibody is generated from rabbits immunized with a KLH conjugated synthetic peptide between 331-360 amino acids from the C-terminal region of human CSNK1E.
<b>Dilution</b>	IHC-P~~1:100~500 WB~~1:1000 E~~Use at an assay dependent concentration.
<b>Format</b>	Purified polyclonal antibody supplied in PBS with 0.09% (W/V) sodium azide. This antibody is prepared by Saturated Ammonium Sulfate (SAS) precipitation followed by dialysis against PBS.
<b>Storage</b>	Maintain refrigerated at 2-8°C for up to 2 weeks. For long term storage store at -20°C in small aliquots to prevent freeze-thaw cycles.
<b>Precautions</b>	CSNK1E Antibody (C-term) is for research use only and not for use in diagnostic or therapeutic procedures.

## Protein Information

---

### Background

---

CK1e is a serine/threonine protein kinase and a member of the casein kinase I protein family, whose members have been implicated in the control of cytoplasmic and nuclear processes, including DNA replication and repair. This protein is found in the cytoplasm as a monomer and can phosphorylate a variety of proteins, including itself. It has been shown to phosphorylate period, a circadian rhythm protein.

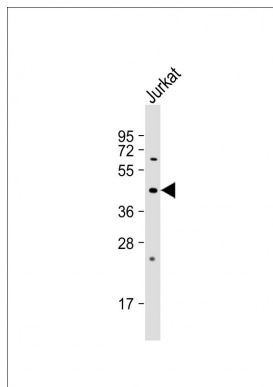
### References

---

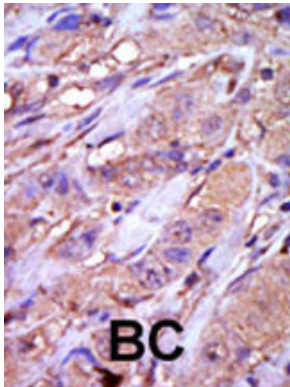
Hino, S., et al., J. Biol. Chem. 278(16):14066-14073 (2003). Eide, E.J., et al., J. Biol. Chem. 277(19):17248-17254 (2002). Keesler, G.A., et al., Neuroreport 11(5):951-955 (2000). Cegielska, A., et al., J. Biol. Chem. 273(3):1357-1364 (1998). Kloss, B., et al., Cell 94(1):97-107 (1998).

## Images

---



Anti-CSNK1E (E346) at 1:1000 dilution + Jurkat whole cell lysate Lysates/proteins at 20 µg per lane. Secondary Goat Anti-Rabbit IgG, (H+L), Peroxidase conjugated at 1/10000 dilution. Predicted band size : 47 kDa Blocking/Dilution buffer: 5% NFDM/TBST.



Formalin-fixed and paraffin-embedded human cancer tissue reacted with the primary antibody, which was peroxidase-conjugated to the secondary antibody, followed by DAB staining. This data demonstrates the use of this antibody for immunohistochemistry; clinical relevance has not been evaluated. BC = breast carcinoma; HC = hepatocarcinoma.

## Citations

---

- [Phosphorylation by Akt1 promotes cytoplasmic localization of Skp2 and impairs APCCdh1-mediated Skp2 destruction.](#)
- [Progression Risk Score Estimation Based on Immunostaining Data in Oral Cancer Using Unsupervised Hierarchical Clustering Analysis: A Retrospective Study in Taiwan.](#)

Please note: All products are 'FOR RESEARCH USE ONLY. NOT FOR USE IN DIAGNOSTIC OR THERAPEUTIC PROCEDURES'.