

Corticotropin-releasing factor receptor 2 Polyclonal Antibody

Catalog # AP74043

Product Information

Application	WB
Primary Accession	Q13324
Reactivity	Human, Rat
Host	Rabbit
Clonality	Polyclonal
Calculated MW	47688

Additional Information

Gene ID	1395
Other Names	Corticotropin-releasing factor receptor 2 (CRF-R-2) (CRF-R2) (CRFR-2) (Corticotropin-releasing hormone receptor 2) (CRH-R-2) (CRH-R2)
Dilution	WB~~WB 1:500-2000, ELISA 1:10000-20000
Format	Liquid in PBS containing 50% glycerol, 0.5% BSA and 0.09% (W/V) sodium azide.
Storage Conditions	-20°C

Protein Information

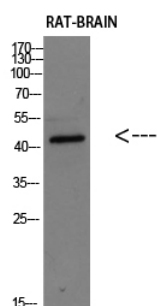
Name	CRHR2
Synonyms	CRF2R, CRH2R
Function	G-protein coupled receptor for CRH (corticotropin-releasing factor), UCN (urocortin), UCN2 and UCN3. Has high affinity for UCN. Ligand binding causes a conformation change that triggers signaling via guanine nucleotide-binding proteins (G proteins) and down-stream effectors, such as adenylate cyclase. Promotes the activation of adenylate cyclase, leading to increased intracellular cAMP levels.
Cellular Location	Cell membrane; Multi-pass membrane protein

Background

G-protein coupled receptor for CRH (corticotropin-releasing factor), UCN (urocortin), UCN2 and UCN3. Has high affinity for UCN. Ligand binding causes a conformation change that triggers signaling via guanine

nucleotide-binding proteins (G proteins) and down-stream effectors, such as adenylate cyclase. Promotes the activation of adenylate cyclase, leading to increased intracellular cAMP levels.

Images



Western blot analysis of RAT-BRAIN Cell Lysate, antibody was diluted at 1:1000. Secondary antibody was diluted at 1:20000

Please note: All products are 'FOR RESEARCH USE ONLY. NOT FOR USE IN DIAGNOSTIC OR THERAPEUTIC PROCEDURES'.