

Dsg1 Polyclonal Antibody

Catalog # AP74069

Product Information

Application	WB, IHC-P
Primary Accession	Q02413
Reactivity	Human, Mouse, Rat
Host	Rabbit
Clonality	Polyclonal
Calculated MW	113748

Additional Information

Gene ID	1828
Other Names	Desmoglein-1 (Cadherin family member 4) (Desmosomal glycoprotein 1) (DG1) (DGI) (Pemphigus foliaceus antigen)
Dilution	WB~~WB 1:500-2000,IHC-p 1:500-200, ELISA 1:10000-20000 IHC-P~~N/A
Format	Liquid in PBS containing 50% glycerol, 0.5% BSA and 0.09% (W/V) sodium azide.
Storage Conditions	-20°C

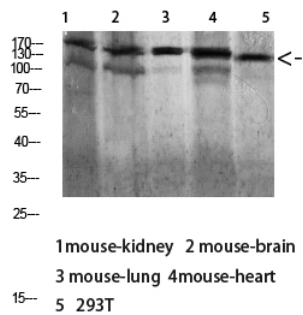
Protein Information

Name	DSG1
Synonyms	CDHF4
Function	Component of intercellular desmosome junctions (PubMed: 34368962). Involved in the interaction of plaque proteins and intermediate filaments mediating cell-cell adhesion (PubMed: 19717567).
Cellular Location	Cell membrane; Single-pass type I membrane protein {ECO:0000250 UniProtKB:Q7TSF1} Cell junction, desmosome. Cytoplasm. Nucleus
Tissue Location	Expressed in all suprabasal layers of the epidermis, with the highest expression seen in the granular layer (at protein level).

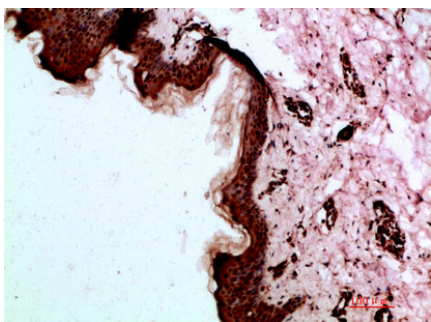
Background

Component of intercellular desmosome junctions. Involved in the interaction of plaque proteins and intermediate filaments mediating cell-cell adhesion.

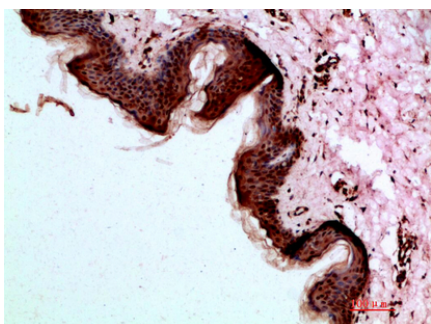
Images



Western blot analysis of 293T lysate, antibody was diluted at 1000. Secondary antibody was diluted at 1:20000



Immunohistochemical analysis of paraffin-embedded human-skin, antibody was diluted at 1:200



Immunohistochemical analysis of paraffin-embedded human-skin, antibody was diluted at 1:200

Please note: All products are 'FOR RESEARCH USE ONLY. NOT FOR USE IN DIAGNOSTIC OR THERAPEUTIC PROCEDURES'.