

CD64 Polyclonal Antibody

Catalog # AP74072

Product Information

Application	WB, IHC-P
Primary Accession	P12314
Reactivity	Human
Host	Rabbit
Clonality	Polyclonal
Calculated MW	42632

Additional Information

Gene ID	2209
Other Names	High affinity immunoglobulin gamma Fc receptor I (IgG Fc receptor I) (Fc-gamma RI) (FcRI) (Fc-gamma RIA) (FcgammaRIa) (CD antigen CD64)
Dilution	WB~~WB 1:500-2000,IHC-p 1:500-200, ELISA 1:10000-20000 IHC-P~~N/A
Format	Liquid in PBS containing 50% glycerol, 0.5% BSA and 0.09% (W/V) sodium azide.
Storage Conditions	-20°C

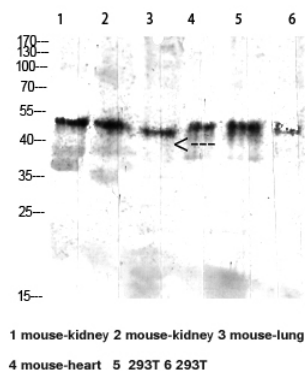
Protein Information

Name	FCGR1A
Synonyms	FCG1, FCGR1, IGFR1
Function	High affinity receptor for the Fc region of immunoglobulins gamma. Functions in both innate and adaptive immune responses. Mediates IgG effector functions on monocytes triggering antibody-dependent cellular cytotoxicity (ADCC) of virus-infected cells.
Cellular Location	Cell membrane; Single-pass type I membrane protein Note=Stabilized at the cell membrane through interaction with FCER1G
Tissue Location	Monocyte/macrophage specific.

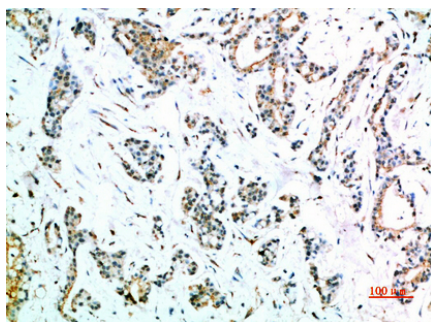
Background

High affinity receptor for the Fc region of immunoglobulins gamma. Functions in both innate and adaptive immune responses.

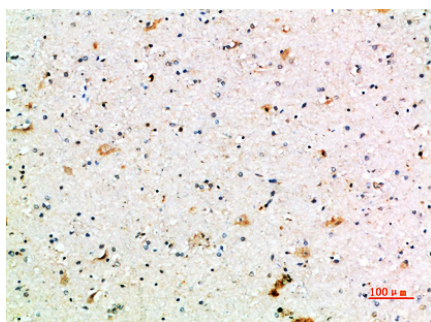
Images



Western blot analysis of mouse-kidney lysate, antibody was diluted at 2000. Secondary antibody was diluted at 1:20000



Immunohistochemical analysis of paraffin-embedded human-stomach-cancer, antibody was diluted at 1:200



Immunohistochemical analysis of paraffin-embedded human-brain, antibody was diluted at 1:200

Please note: All products are 'FOR RESEARCH USE ONLY. NOT FOR USE IN DIAGNOSTIC OR THERAPEUTIC PROCEDURES'.