

PD-L2 Polyclonal Antibody

Catalog # AP74073

Product Information

Application	WB, IHC-P, IF, ICC, E
Primary Accession	Q9BQ51
Reactivity	Human, Rat, Mouse
Host	Rabbit
Clonality	Polyclonal
Calculated MW	30957

Additional Information

Gene ID	80380
Other Names	Programmed cell death 1 ligand 2 (PD-1 ligand 2) (PD-L2) (PDCD1 ligand 2) (Programmed death ligand 2) (Butyrophilin B7-DC) (B7-DC) (CD antigen CD273)
Dilution	WB~~WB 1:500-2000,IHC-p 1:500-200, ELISA 1:10000-20000 IHC-P~~WB 1:500-2000,IHC-p 1:500-200, ELISA 1:10000-20000 IF~~1:50~200 ICC~~N/A E~~N/A
Format	Liquid in PBS containing 50% glycerol, 0.5% BSA and 0.09% (W/V) sodium azide.
Storage Conditions	-20°C

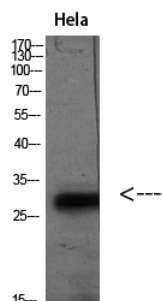
Protein Information

Name	PDCD1LG2
Synonyms	B7DC, CD273, PDCD1L2, PDL2
Function	Involved in the costimulatory signal, essential for T-cell proliferation and IFNG production in a PDCD1-independent manner. Interaction with PDCD1 inhibits T-cell proliferation by blocking cell cycle progression and cytokine production (By similarity).
Cellular Location	[Isoform 3]: Secreted [Isoform 1]: Cell membrane; Single-pass type I membrane protein {ECO:0000250 UniProtKB:Q9WUL5, ECO:0000305 PubMed:15340161}
Tissue Location	Highly expressed in heart, placenta, pancreas, lung and liver and weakly expressed in spleen, lymph nodes and thymus

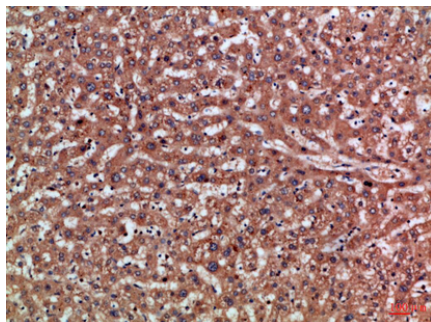
Background

Involved in the costimulatory signal, essential for T- cell proliferation and IFNG production in a PDCD1-independent manner. Interaction with PDCD1 inhibits T-cell proliferation by blocking cell cycle progression and cytokine production (By similarity).

Images



Western blot analysis of HeLa(TSA 400nM 24h) lysate, antibody was diluted at 2000. Secondary antibody was diluted at 1:20000



Immunohistochemical analysis of paraffin-embedded Human-liver, antibody was diluted at 1:100

Please note: All products are 'FOR RESEARCH USE ONLY. NOT FOR USE IN DIAGNOSTIC OR THERAPEUTIC PROCEDURES'.