

CD299 Polyclonal Antibody

Catalog # AP74075

Product Information

Application	WB, IHC-P
Primary Accession	Q9H2X3
Reactivity	Human, Mouse, Rat
Host	Rabbit
Clonality	Polyclonal
Calculated MW	45350

Additional Information

Gene ID	10332
Other Names	C-type lectin domain family 4 member M (CD209 antigen-like protein 1) (DC-SIGN-related protein) (DC-SIGNR) (Dendritic cell-specific ICAM-3-grabbing non-integrin 2) (DC-SIGN2) (Liver/lymph node-specific ICAM-3-grabbing non-integrin) (L-SIGN) (CD antigen CD299)
Dilution	WB~~WB 1:500-2000,IHC-p 1:500-200, ELISA 1:10000-20000 IHC-P~~N/A
Format	Liquid in PBS containing 50% glycerol, 0.5% BSA and 0.09% (W/V) sodium azide.
Storage Conditions	-20°C

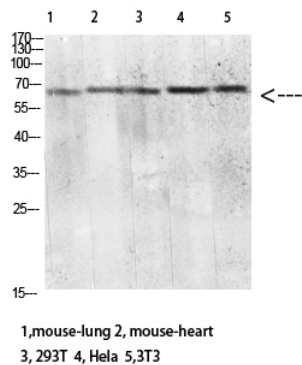
Protein Information

Name	CLEC4M
Synonyms	CD209L, CD209L1, CD299
Function	Probable pathogen-recognition receptor involved in peripheral immune surveillance in liver. May mediate the endocytosis of pathogens which are subsequently degraded in lysosomal compartments. Is a receptor for ICAM3, probably by binding to mannose-like carbohydrates.
Cellular Location	[Isoform 1]: Cell membrane; Single- pass type II membrane protein [Isoform 3]: Cell membrane; Single- pass type II membrane protein [Isoform 6]: Secreted. [Isoform 10]: Secreted.
Tissue Location	Predominantly highly expressed in liver sinusoidal endothelial cells and in lymph node. Found in placental endothelium but not in macrophages. Expressed in type II alveolar cells and lung endothelial cells.

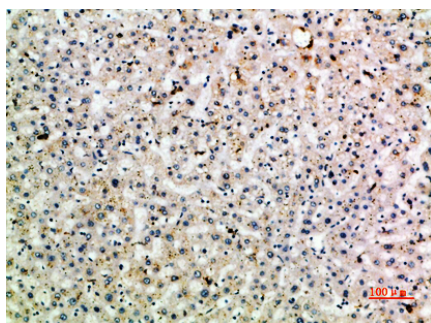
Background

Probable pathogen-recognition receptor involved in peripheral immune surveillance in liver. May mediate the endocytosis of pathogens which are subsequently degraded in lysosomal compartments. Is a receptor for ICAM3, probably by binding to mannose-like carbohydrates.

Images



Western blot analysis of mouse-lung mouse-lung lysate, antibody was diluted at 2000. Secondary antibody was diluted at 1:20000



Immunohistochemical analysis of paraffin-embedded human-liver, antibody was diluted at 1:200

Please note: All products are 'FOR RESEARCH USE ONLY. NOT FOR USE IN DIAGNOSTIC OR THERAPEUTIC PROCEDURES'.