

# Cytokeratin 4 Polyclonal Antibody

Catalog # AP74082

## Product Information

---

<b>Application</b>	WB
<b>Primary Accession</b>	<a href="#">P19013</a>
<b>Reactivity</b>	Human, Mouse, Rat
<b>Host</b>	Rabbit
<b>Clonality</b>	Polyclonal
<b>Calculated MW</b>	56144

## Additional Information

---

<b>Gene ID</b>	3851
<b>Other Names</b>	Keratin, type II cytoskeletal 4 (Cytokeratin-4) (CK-4) (Keratin-4) (K4) (Type-II keratin Kb4)
<b>Dilution</b>	WB~~WB 1:500-2000, ELISA 1:10000-20000
<b>Format</b>	Liquid in PBS containing 50% glycerol, 0.5% BSA and 0.09% (W/V) sodium azide.
<b>Storage Conditions</b>	-20°C

## Protein Information

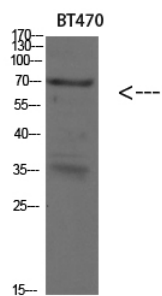
---

<b>Name</b>	KRT4
<b>Synonyms</b>	CYK4
<b>Tissue Location</b>	Detected in the suprabasal layer of the stratified epithelium of the esophagus, exocervix, vagina, mouth and lingual mucosa, and in cells and cell clusters in the mucosa and serous gland ducts of the esophageal submucosa (at protein level). Expressed widely in the exocervix and esophageal epithelium, with lowest levels detected in the basal cell layer.

## Images

---

Western blot analysis of SKOV3 293T lysate, antibody was diluted at 500. Secondary antibody was diluted at 1:20000



Please note: All products are 'FOR RESEARCH USE ONLY. NOT FOR USE IN DIAGNOSTIC OR THERAPEUTIC PROCEDURES'.