

# DDT Polyclonal Antibody

Catalog # AP74088

## Product Information

---

<b>Application</b>	IHC-P
<b>Primary Accession</b>	<a href="#">P30046</a>
<b>Reactivity</b>	Human, Mouse, Rat
<b>Host</b>	Rabbit
<b>Clonality</b>	Polyclonal
<b>Calculated MW</b>	12712

## Additional Information

---

<b>Gene ID</b>	1652
<b>Other Names</b>	D-dopachrome decarboxylase (EC 4.1.1.84) (D-dopachrome tautomerase) (Phenylpyruvate tautomerase II)
<b>Dilution</b>	IHC-P~~N/A
<b>Format</b>	Liquid in PBS containing 50% glycerol, 0.5% BSA and 0.09% (W/V) sodium azide.
<b>Storage Conditions</b>	-20°C

## Protein Information

---

<b>Name</b>	DDT
<b>Function</b>	Tautomerization of D-dopachrome with decarboxylation to give 5,6-dihydroxyindole (DHI).
<b>Cellular Location</b>	Cytoplasm.
<b>Tissue Location</b>	Highly expressed in the liver and at lower levels in the heart, lung and pancreas.

## Background

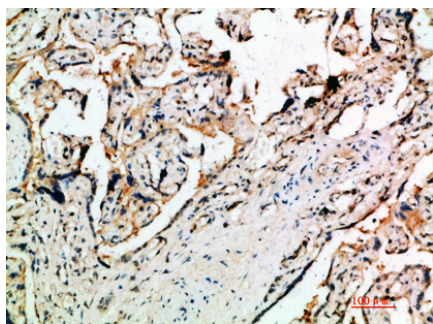
---

Tautomerization of D-dopachrome with decarboxylation to give 5,6-dihydroxyindole (DHI).

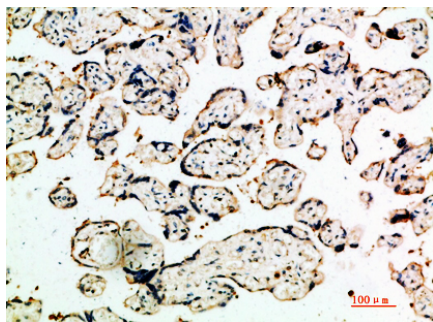
## Images

---

Immunohistochemical analysis of paraffin-embedded



human-placenta, antibody was diluted at 1:200



Immunohistochemical analysis of paraffin-embedded human-placenta, antibody was diluted at 1:200

Please note: All products are 'FOR RESEARCH USE ONLY. NOT FOR USE IN DIAGNOSTIC OR THERAPEUTIC PROCEDURES'.