

# FSH $\beta$ Polyclonal Antibody

Catalog # AP74092

## Product Information

---

<b>Application</b>	IHC-P
<b>Primary Accession</b>	<a href="#">P01225</a>
<b>Reactivity</b>	Human, Mouse, Rat
<b>Host</b>	Rabbit
<b>Clonality</b>	Polyclonal
<b>Calculated MW</b>	14700

## Additional Information

---

<b>Gene ID</b>	2488
<b>Other Names</b>	Follitropin subunit beta (Follicle-stimulating hormone beta subunit) (FSH-B) (FSH-beta) (Follitropin beta chain)
<b>Dilution</b>	IHC-P~~IHC-p 1:50-200, ELISA 1:10000-20000
<b>Format</b>	Liquid in PBS containing 50% glycerol, 0.5% BSA and 0.09% (W/V) sodium azide.
<b>Storage Conditions</b>	-20°C

## Protein Information

---

<b>Name</b>	FSHB
<b>Function</b>	Together with the alpha chain CGA constitutes follitropin, the follicle-stimulating hormone, and provides its biological specificity to the hormone heterodimer. Binds FSHR, a G protein-coupled receptor, on target cells to activate downstream signaling pathways (PubMed: <a href="#">24692546</a> , PubMed: <a href="#">2494176</a> ). Follitropin is involved in follicle development and spermatogenesis in reproductive organs (PubMed: <a href="#">407105</a> , PubMed: <a href="#">8220432</a> ).
<b>Cellular Location</b>	Secreted. Note=Efficient secretion requires dimerization with CGA

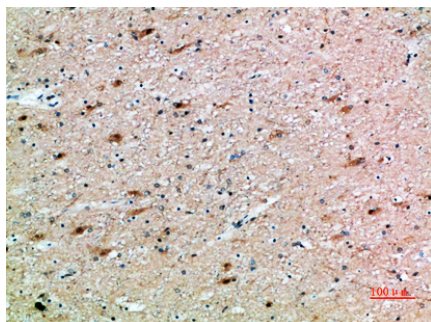
## Background

---

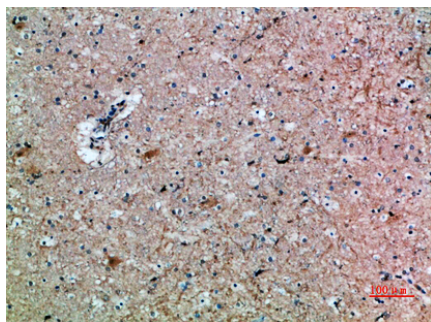
Together with the alpha chain CGA constitutes follitropin, the follicle-stimulating hormone, and provides its biological specificity to the hormone heterodimer. Binds FSHR, a G protein-coupled receptor, on target cells to activate downstream signaling pathways (PubMed:[2494176](#), PubMed:[24692546](#)). Follitropin is involved in follicle development and spermatogenesis in reproductive organs (PubMed:[407105](#), PubMed:[8220432](#)).

## Images

---



Immunohistochemical analysis of paraffin-embedded human-brain, antibody was diluted at 1:200



Immunohistochemical analysis of paraffin-embedded human-brain, antibody was diluted at 1:200

Please note: All products are 'FOR RESEARCH USE ONLY. NOT FOR USE IN DIAGNOSTIC OR THERAPEUTIC PROCEDURES'.