

GRO α Polyclonal Antibody

Catalog # AP74101

Product Information

| | |
|--------------------------|------------------------|
| Application | IHC-P |
| Primary Accession | P09341 |
| Reactivity | Human |
| Host | Rabbit |
| Clonality | Polyclonal |
| Calculated MW | 11301 |

Additional Information

| | |
|---------------------------|--|
| Gene ID | 2919 |
| Other Names | Growth-regulated alpha protein (C-X-C motif chemokine 1) (GRO-alpha(1-73)) (Melanoma growth stimulatory activity) (MGSA) (Neutrophil-activating protein 3) (NAP-3) [Cleaved into: GRO-alpha(4-73); GRO-alpha(5-73); GRO-alpha(6-73)] |
| Dilution | IHC-P~~N/A |
| Format | Liquid in PBS containing 50% glycerol, 0.5% BSA and 0.09% (W/V) sodium azide. |
| Storage Conditions | -20°C |

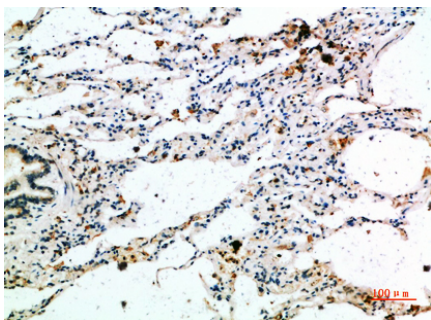
Protein Information

| | |
|--------------------------|--|
| Name | CXCL1 |
| Synonyms | GRO, GRO1, GROA, MGSA, SCYB1 |
| Function | Has chemotactic activity for neutrophils. May play a role in inflammation and exerts its effects on endothelial cells in an autocrine fashion. In vitro, the processed forms GRO-alpha(4-73), GRO- alpha(5-73) and GRO-alpha(6-73) show a 30-fold higher chemotactic activity. |
| Cellular Location | Secreted. |

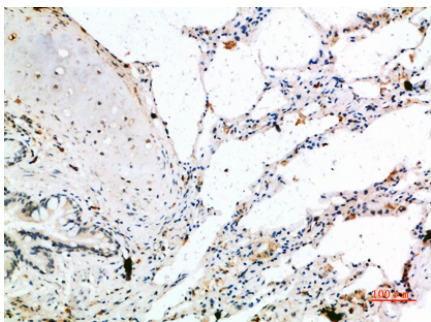
Background

Has chemotactic activity for neutrophils. May play a role in inflammation and exerts its effects on endothelial cells in an autocrine fashion. In vitro, the processed forms GRO- alpha(4-73), GRO-alpha(5-73) and GRO-alpha(6-73) show a 30-fold higher chemotactic activity.

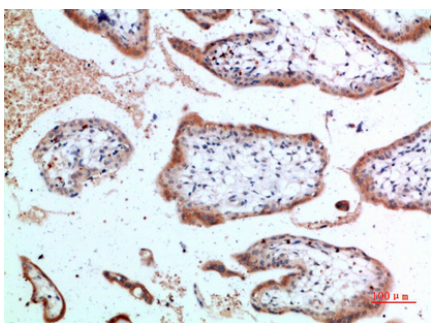
Images



Immunohistochemical analysis of paraffin-embedded human-lung(), antibody was diluted at 1:200



Immunohistochemical analysis of paraffin-embedded human-lung, antibody was diluted at 1:200



Immunohistochemical analysis of paraffin-embedded human-placenta, antibody was diluted at 1:200

Please note: All products are 'FOR RESEARCH USE ONLY. NOT FOR USE IN DIAGNOSTIC OR THERAPEUTIC PROCEDURES'.