

CD1B Polyclonal Antibody

Catalog # AP74105

Product Information

Application	IHC-P
Primary Accession	P29016
Reactivity	Human
Host	Rabbit
Clonality	Polyclonal
Calculated MW	36939

Additional Information

Gene ID	910
Other Names	T-cell surface glycoprotein CD1b (CD antigen CD1b)
Dilution	IHC-P~~IHC-p 1:50-200, ELISA 1:10000-20000
Format	Liquid in PBS containing 50% glycerol, 0.5% BSA and 0.09% (W/V) sodium azide.
Storage Conditions	-20°C

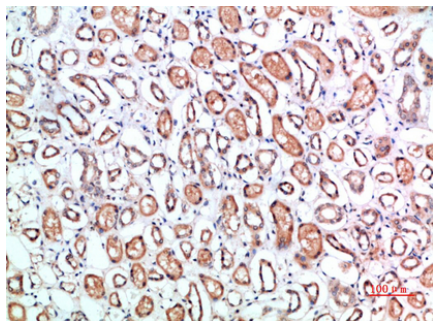
Protein Information

Name	CD1B
Function	Antigen-presenting protein that binds self and non-self lipid and glycolipid antigens and presents them to T-cell receptors on natural killer T-cells.
Cellular Location	Cell membrane; Single-pass type I membrane protein. Endosome membrane; Single-pass type I membrane protein. Lysosome membrane; Single-pass type I membrane protein. Note=Subject to intracellular trafficking between the cell membrane, endosomes and lysosomes.
Tissue Location	Expressed on cortical thymocytes, on certain T-cell leukemias, and in various other tissues

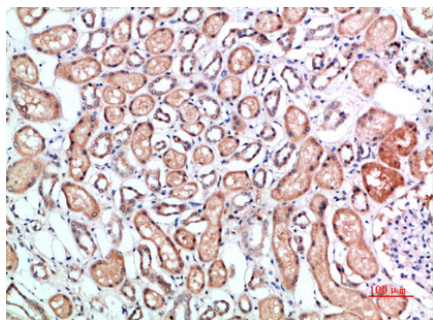
Background

Antigen-presenting protein that binds self and non-self lipid and glycolipid antigens and presents them to T-cell receptors on natural killer T-cells.

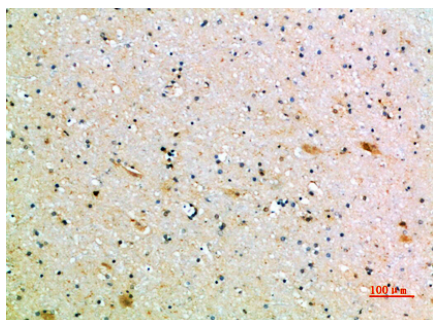
Images



Immunohistochemical analysis of paraffin-embedded human-kidney, antibody was diluted at 1:200



Immunohistochemical analysis of paraffin-embedded human-kidney, antibody was diluted at 1:200



Immunohistochemical analysis of paraffin-embedded human-brain, antibody was diluted at 1:200

Please note: All products are 'FOR RESEARCH USE ONLY. NOT FOR USE IN DIAGNOSTIC OR THERAPEUTIC PROCEDURES'.