

CD11b Polyclonal Antibody

Catalog # AP74106

Product Information

Application	IHC-P
Primary Accession	P11215
Reactivity	Human
Host	Rabbit
Clonality	Polyclonal
Calculated MW	127179

Additional Information

Gene ID	3684
Other Names	Integrin alpha-M (CD11 antigen-like family member B) (CR-3 alpha chain) (Cell surface glycoprotein MAC-1 subunit alpha) (Leukocyte adhesion receptor MO1) (Neutrophil adherence receptor) (CD antigen CD11b)
Dilution	IHC-P~~IHC-p 1:50-200, ELISA 1:10000-20000
Format	Liquid in PBS containing 50% glycerol, 0.5% BSA and 0.09% (W/V) sodium azide.
Storage Conditions	-20°C

Protein Information

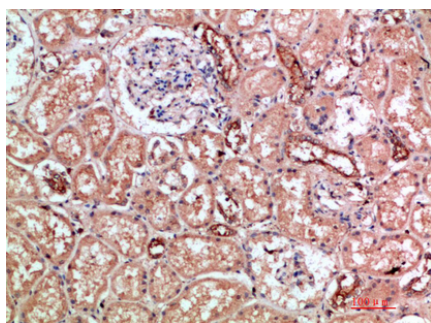
Name	ITGAM
Synonyms	CD11B, CR3A
Function	<p>Integrin ITGAM/ITGB2 is implicated in various adhesive interactions of monocytes, macrophages and granulocytes as well as in mediating the uptake of complement-coated particles and pathogens (PubMed:20008295, PubMed:9558116). It is identical with CR-3, the receptor for the iC3b fragment of the third complement component. It probably recognizes the R-G-D peptide in C3b. Integrin ITGAM/ITGB2 is also a receptor for fibrinogen, factor X and ICAM1. It recognizes P1 and P2 peptides of fibrinogen gamma chain. Regulates neutrophil migration (PubMed:28807980). In association with beta subunit ITGB2/CD18, required for CD177-PRTN3-mediated activation of TNF primed neutrophils (PubMed:21193407). May regulate phagocytosis-induced apoptosis in extravasated neutrophils (By similarity). May play a role in mast cell development (By similarity). Required with TYROBP/DAP12 in microglia to control production of microglial superoxide ions which promote the neuronal apoptosis that occurs during brain development (By similarity).</p>

Cellular Location	Cell membrane; Single-pass type I membrane protein. Membrane raft; Single-pass type I membrane protein
Tissue Location	Predominantly expressed in monocytes and granulocytes (PubMed:1346576). Expressed in neutrophils (at protein level) (PubMed:21193407).

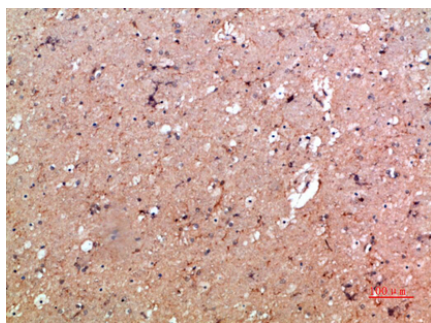
Background

Integrin ITGAM/ITGB2 is implicated in various adhesive interactions of monocytes, macrophages and granulocytes as well as in mediating the uptake of complement-coated particles and pathogens (PubMed:[9558116](#), PubMed:[20008295](#)). It is identical with CR-3, the receptor for the iC3b fragment of the third complement component. It probably recognizes the R-G-D peptide in C3b. Integrin ITGAM/ITGB2 is also a receptor for fibrinogen, factor X and ICAM1. It recognizes P1 and P2 peptides of fibrinogen gamma chain. Regulates neutrophil migration (PubMed:[28807980](#)). In association with beta subunit ITGB2/CD18, required for CD177- PRTN3-mediated activation of TNF primed neutrophils (PubMed:[21193407](#)). May regulate phagocytosis-induced apoptosis in extravasated neutrophils (By similarity). May play a role in mast cell development (By similarity).

Images



Immunohistochemical analysis of paraffin-embedded human-kidney, antibody was diluted at 1:200



Immunohistochemical analysis of paraffin-embedded human-brain, antibody was diluted at 1:200

Please note: All products are 'FOR RESEARCH USE ONLY. NOT FOR USE IN DIAGNOSTIC OR THERAPEUTIC PROCEDURES'.