

# CD303 Polyclonal Antibody

Catalog # AP74113

## Product Information

Application	IHC-P
Primary Accession	<a href="#">Q8WTT0</a>
Reactivity	Human
Host	Rabbit
Clonality	Polyclonal
Calculated MW	25038

## Additional Information

Gene ID	170482
Other Names	C-type lectin domain family 4 member C (Blood dendritic cell antigen 2) (BDCA-2) (C-type lectin superfamily member 7) (Dendritic lectin) (CD antigen CD303)
Dilution	IHC-P~~N/A
Format	Liquid in PBS containing 50% glycerol, 0.5% BSA and 0.09% (W/V) sodium azide.
Storage Conditions	-20°C

## Protein Information

Name	CLEC4C
Synonyms	BDCA2, CLECSF11, CLECSF7, DLEC, HECL
Function	Lectin-type cell surface receptor which may play a role in antigen capturing by dendritic cells (PubMed: <a href="#">11748283</a> , PubMed: <a href="#">21880719</a> , PubMed: <a href="#">25995448</a> ). Specifically recognizes non-sialylated galactose- terminated biantennary glycans containing the trisaccharide epitope Gal(beta1-3/4)GlcNAc(beta1-2)Man (PubMed: <a href="#">21880719</a> , PubMed: <a href="#">25995448</a> ). Binds to serum IgG (PubMed: <a href="#">25995448</a> ). Efficiently targets ligand into antigen-processing and peptide-loading compartments for presentation to T-cells (PubMed: <a href="#">11748283</a> ). May mediate potent inhibition of induction of IFN-alpha/beta expression in plasmacytoid dendritic cells (PubMed: <a href="#">11748283</a> , PubMed: <a href="#">21880719</a> ). May act as a signaling receptor that activates protein-tyrosine kinases and mobilizes intracellular calcium (PubMed: <a href="#">11748283</a> ).
Cellular Location	Cell membrane; Single-pass type II membrane protein

## Tissue Location

Expressed in plasmacytoid dendritic cells (PDCs). Constitutively expressed in immature monocyte-derived dendritic cells (iMDDC) and is significantly down-regulated upon maturation with LPS but not with TNF-alpha.

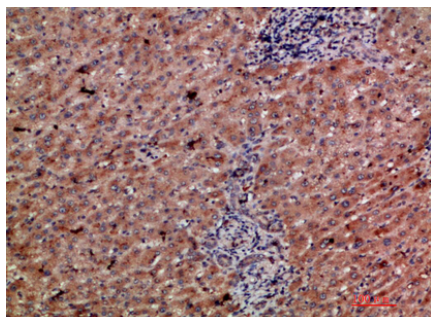
## Background

---

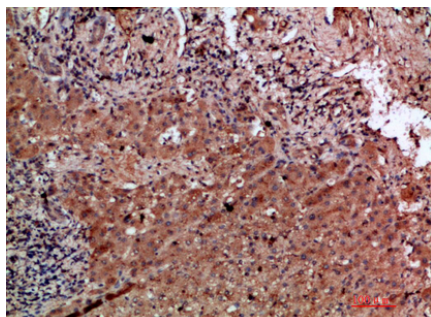
Lectin-type cell surface receptor which may play a role in antigen capturing by dendritic cells (PubMed:[11748283](#), PubMed:[21880719](#), PubMed:[25995448](#)). Specifically recognizes non- sialylated galactose-terminated biantennary glycans containing the trisaccharide epitope Gal(beta1-3/4)GlcNAc(beta1-2)Man (PubMed:[21880719](#), PubMed:[25995448](#)). Binds to serum IgG (PubMed:[25995448](#)). Efficiently targets ligand into antigen- processing and peptide-loading compartments for presentation to T- cells (PubMed:[11748283](#)). May mediate potent inhibition of induction of IFN-alpha/beta expression in plasmacytoid dendritic cells (PubMed:[11748283](#), PubMed:[21880719](#)). May act as a signaling receptor that activates protein-tyrosine kinases and mobilizes intracellular calcium (PubMed:[11748283](#)).

## Images

---



Immunohistochemical analysis of paraffin-embedded human-liver-cancer, antibody was diluted at 1:200



Immunohistochemical analysis of paraffin-embedded human-liver-cancer, antibody was diluted at 1:200

Please note: All products are 'FOR RESEARCH USE ONLY. NOT FOR USE IN DIAGNOSTIC OR THERAPEUTIC PROCEDURES'.