

CD300e Polyclonal Antibody

Catalog # AP74117

Product Information

Application	IHC-P, IF, ICC, E
Primary Accession	Q496F6
Reactivity	Human, Rat, Mouse
Host	Rabbit
Clonality	Polyclonal
Calculated MW	22918

Additional Information

Gene ID	342510
Other Names	CMRF35-like molecule 2 (CLM-2) (CD300 antigen-like family member E) (CMRF35-A5) (Immune receptor expressed on myeloid cells 2) (IREM-2) (Polymeric immunoglobulin receptor 2) (PIgR-2) (PIgR2) (Poly-Ig receptor 2) (CD antigen CD300e)
Dilution	IHC-P~~IHC-p 1:50-200, ELISA 1:10000-20000 IF~~1:50~200 ICC~~N/A E~~N/A
Format	Liquid in PBS containing 50% glycerol, 0.5% BSA and 0.09% (W/V) sodium azide.
Storage Conditions	-20°C

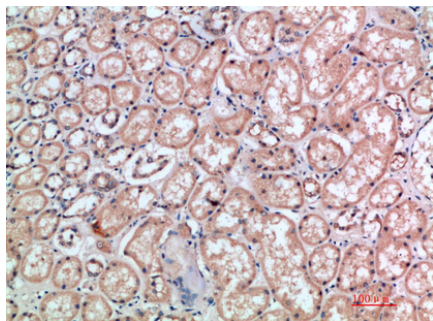
Protein Information

Name	CD300E
Synonyms	CD300LE, CLM2, CMRF35A5, IREM2
Function	Probably acts as an activating receptor.
Cellular Location	Cell membrane; Single-pass type I membrane protein
Tissue Location	Present on the surface of mature hematopoietic cells of the monocyte and myeloid lineages (at protein level)

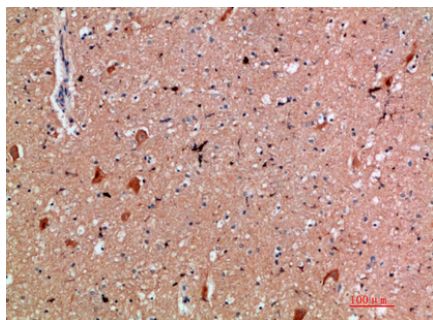
Background

Probably acts as an activating receptor.

Images



Immunohistochemical analysis of paraffin-embedded human-kidney, antibody was diluted at 1:200



Immunohistochemical analysis of paraffin-embedded human-brain, antibody was diluted at 1:200

Please note: All products are 'FOR RESEARCH USE ONLY. NOT FOR USE IN DIAGNOSTIC OR THERAPEUTIC PROCEDURES'.