

CD218b Polyclonal Antibody

Catalog # AP74123

Product Information

Application	IHC-P
Primary Accession	O95256
Reactivity	Human
Host	Rabbit
Clonality	Polyclonal
Calculated MW	68310

Additional Information

Gene ID	8807
Other Names	Interleukin-18 receptor accessory protein (IL-18 receptor accessory protein) (IL-18RAcP) (Accessory protein-like) (AcPL) (CD218 antigen-like family member B) (CDw218b) (IL-1R accessory protein-like) (IL-1RAcPL) (Interleukin-1 receptor 7) (IL-1R-7) (IL-1R7) (Interleukin-18 receptor accessory protein-like) (Interleukin-18 receptor beta) (IL-18R-beta) (IL-18Rbeta) (CD antigen CD218b)
Dilution	IHC-P~~N/A
Format	Liquid in PBS containing 50% glycerol, 0.5% BSA and 0.09% (W/V) sodium azide.
Storage Conditions	-20°C

Protein Information

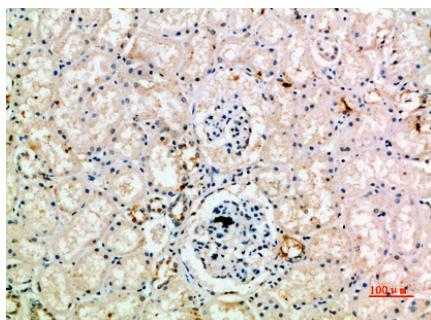
Name	IL18RAP (HGNC:5989)
Synonyms	IL1R7
Function	Within the IL18 receptor complex, does not mediate IL18- binding, but involved in IL18-dependent signal transduction, leading to NF-kappa-B and JNK activation (PubMed: 14528293 , PubMed: 25500532 , PubMed: 9792649). May play a role in IL18-mediated IFNG synthesis from T-helper 1 (Th1) cells (Probable).
Cellular Location	Cell membrane; Single-pass type I membrane protein
Tissue Location	Detected in adrenal gland, bone marrow, brain, fetal brain, fetal liver, heart, kidney, lung, liver, peripheral blood leukocytes, placenta, prostate, salivary gland, skeletal muscle, spinal cord, testis, thymus, thyroid, trachea and uterus (PubMed:17897836) Strongly expressed in peripheral blood leukocytes and spleen and, to a lesser extent, in colon (PubMed:9792649). Specifically

coexpressed with IL18R1 in T-helper 1 (Th1) cells (PubMed:10653850, PubMed:10925275, PubMed:11046021).

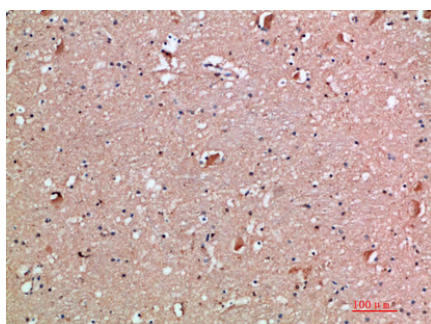
Background

Within the IL18 receptor complex, does not mediate IL18- binding, but involved in IL18-dependent signal transduction, leading to NF-kappa-B and JNK activation (PubMed:[9792649](#), PubMed:[14528293](#), PubMed:[25500532](#)). May play a role in IL18- mediated IFNG synthesis from T-helper 1 (Th1) cells (Probable).

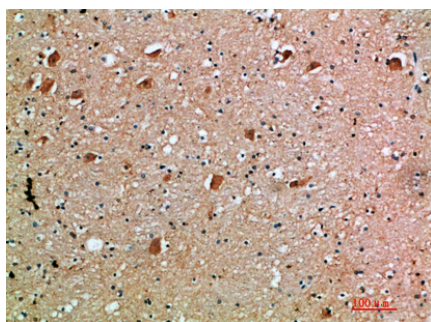
Images



Immunohistochemical analysis of paraffin-embedded human-kidney, antibody was diluted at 1:200



Immunohistochemical analysis of paraffin-embedded human-brain, antibody was diluted at 1:200



Immunohistochemical analysis of paraffin-embedded human-brain, antibody was diluted at 1:200

Please note: All products are 'FOR RESEARCH USE ONLY. NOT FOR USE IN DIAGNOSTIC OR THERAPEUTIC PROCEDURES'.