

CKR-1 Polyclonal Antibody

Catalog # AP74124

Product Information

Application	IHC-P
Primary Accession	P32246
Reactivity	Human
Host	Rabbit
Clonality	Polyclonal
Calculated MW	41173

Additional Information

Gene ID	1230
Other Names	C-C chemokine receptor type 1 (C-C CKR-1) (CC-CKR-1) (CCR-1) (CCR1) (HM145) (LD78 receptor) (Macrophage inflammatory protein 1-alpha receptor) (MIP-1alpha-R) (RANTES-R) (CD antigen CD191)
Dilution	IHC-P~~N/A
Format	Liquid in PBS containing 50% glycerol, 0.5% BSA and 0.09% (W/V) sodium azide.
Storage Conditions	-20°C

Protein Information

Name	CCR1
Synonyms	CMKBR1, CMKR1, SCYAR1
Function	Chemokine receptor that plays a crucial role in regulating immune cell migration, inflammation, and immune responses (PubMed: 14991608). Contributes to the inflammatory response by recruiting immune cells, such as monocytes, macrophages, T-cells, and dendritic cells, to sites of inflammation for the clearance of pathogens and the resolution of tissue damage. When activated by its ligands including CCL3, CCL5-9, CCL13-16 and CCL23, triggers a signaling cascade within immune cells, leading to their migration towards the source of the chemokine (PubMed: 15905581). For example, mediates neutrophil migration after activation by CCL3 leading to the sequential release of TNF-alpha and leukotriene B4 (By similarity). Also mediates monocyte migration upon CXCL4 binding (PubMed: 29930254). Activation by CCL5 results in neuroinflammation through the ERK1/2 signaling pathway (By similarity).
Cellular Location	Cell membrane; Multi-pass membrane protein

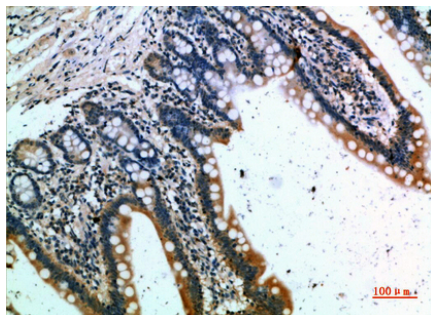
Tissue Location

Widely expressed in different hematopoietic cells.

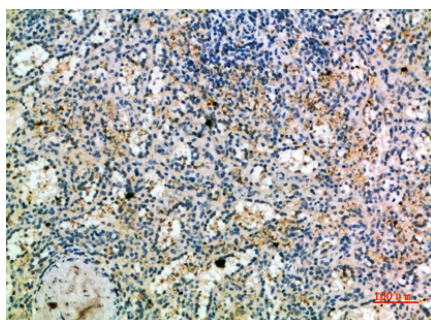
Background

Receptor for a C-C type chemokine. Binds to MIP-1-alpha, MIP-1-delta, RANTES, and MCP-3 and, less efficiently, to MIP-1- beta or MCP-1 and subsequently transduces a signal by increasing the intracellular calcium ions level. Responsible for affecting stem cell proliferation.

Images



Immunohistochemical analysis of paraffin-embedded human-small-intestine, antibody was diluted at 1:200



Immunohistochemical analysis of paraffin-embedded human-spleen, antibody was diluted at 1:200

Please note: All products are 'FOR RESEARCH USE ONLY. NOT FOR USE IN DIAGNOSTIC OR THERAPEUTIC PROCEDURES'.