

CD327 Polyclonal Antibody

Catalog # AP74128

Product Information

Application	IHC-P, IF, ICC, E
Primary Accession	O43699
Reactivity	Human, Rat, Mouse
Host	Rabbit
Clonality	Polyclonal
Calculated MW	49913

Additional Information

Gene ID	946
Other Names	Sialic acid-binding Ig-like lectin 6 (Siglec-6) (CD33 antigen-like 1) (CDw327) (Obesity-binding protein 1) (OB-BP1) (CD antigen CD327)
Dilution	IHC-P~~IHC-p 1:50-200, ELISA 1:10000-20000 IF~~1:50~200 ICC~~N/A E~~N/A
Format	Liquid in PBS containing 50% glycerol, 0.5% BSA and 0.09% (W/V) sodium azide.
Storage Conditions	-20°C

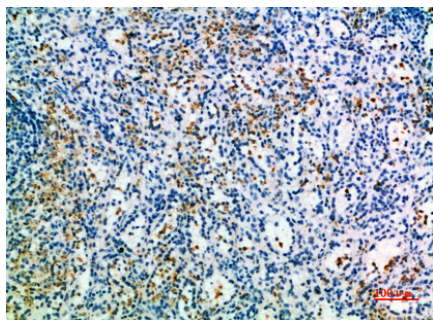
Protein Information

Name	SIGLEC6
Synonyms	CD33L, CD33L1, OBBP1
Function	Putative adhesion molecule that mediates sialic-acid dependent binding to cells. Binds to alpha-2,6-linked sialic acid. The sialic acid recognition site may be masked by cis interactions with sialic acids on the same cell surface.
Cellular Location	[Isoform 1]: Cell membrane; Single-pass type I membrane protein
Tissue Location	Expressed at high levels in placenta (cyto- and syncytiotrophoblastic cells) and at lower levels in spleen, peripheral blood leukocytes (predominantly B-cells) and small intestine

Background

Putative adhesion molecule that mediates sialic-acid dependent binding to cells. Binds to alpha-2,6-linked sialic acid. The sialic acid recognition site may be masked by cis interactions with sialic acids on the same cell surface.

Images



Immunohistochemical analysis of paraffin-embedded human-spleen, antibody was diluted at 1:200

Please note: All products are 'FOR RESEARCH USE ONLY. NOT FOR USE IN DIAGNOSTIC OR THERAPEUTIC PROCEDURES'.