

# IL-1F7 Polyclonal Antibody

Catalog # AP74137

## Product Information

<b>Application</b>	IHC-P, IF, ICC, E
<b>Primary Accession</b>	<a href="#">Q9NZH6</a>
<b>Reactivity</b>	Human, Rat, Mouse
<b>Host</b>	Rabbit
<b>Clonality</b>	Polyclonal
<b>Calculated MW</b>	24126

## Additional Information

<b>Gene ID</b>	27178
<b>Other Names</b>	Interleukin-37 (FIL1 zeta) (IL-1X) (Interleukin-1 family member 7) (IL-1F7) (Interleukin-1 homolog 4) (IL-1H) (IL-1H4) (Interleukin-1 zeta) (IL-1 zeta) (Interleukin-1-related protein) (IL-1RP1) (Interleukin-23) (IL-37)
<b>Dilution</b>	IHC-P~~IHC-p 1:50-200, ELISA 1:10000-20000 IF~~1:50~200 ICC~~N/A E~~N/A
<b>Format</b>	Liquid in PBS containing 50% glycerol, 0.5% BSA and 0.09% (W/V) sodium azide.
<b>Storage Conditions</b>	-20°C

## Protein Information

<b>Name</b>	IL37 ( <a href="#">HGNC:15563</a> )
<b>Function</b>	Immune regulatory cytokine that acts as a suppressor of innate inflammatory and immune responses involved in curbing excessive inflammation. Signaling can occur via two mechanisms, intracellularly through nuclear translocation with SMAD3 and extracellularly after secretion and binding to its receptor composed of IL18R1 and IL18RAP. Suppresses, or reduces, pro-inflammatory cytokine production, including IL1A and IL6, as well as CCL12, CSF1, CSF2, CXCL13, IL1B, IL23A and IL1RN, but spares anti-inflammatory cytokines. Inhibits dendritic cell activation.
<b>Cellular Location</b>	Cytoplasm, cytosol. Nucleus. Secreted Note=Stimulation with IL1B leads to colocalization with SMAD3 mostly in perinuclear regions (PubMed:20935647, PubMed:33674380). Only the CASP1- cleaved mature form translocates into the nucleus upon LPS stimulation (PubMed:18390730). The secretion is dependent on protein unfolding and facilitated by the cargo receptor TMED10; it results in protein translocation from the cytoplasm into the ERGIC (endoplasmic reticulum- Golgi intermediate compartment) followed by vesicle entry and secretion (PubMed:32272059, PubMed:33674380).

## Tissue Location

In general, low constitutive expression, if any, in healthy tissues; high expression in inflammatory counterparts, including in synovial tissues from individuals with active rheumatoid arthritis. Isoform A, isoform B and isoform C are expressed in testis, colon, placenta, lung and lymph node. Isoform D and isoform E were found only in testis and bone marrow. Whereas only isoform A is found in brain, only isoform B in kidney and only isoform C in heart

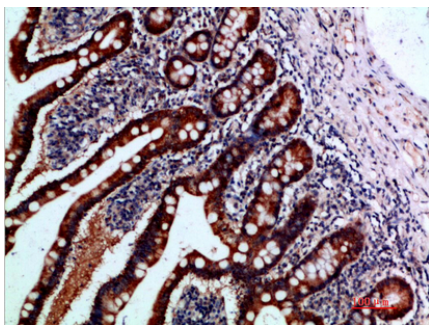
## Background

---

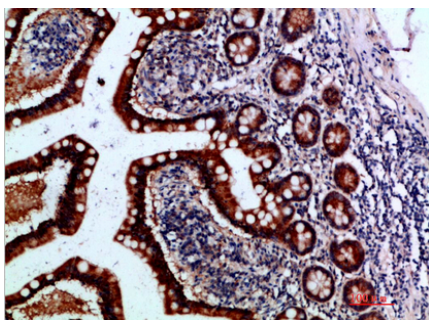
Suppressor of innate inflammatory and immune responses involved in curbing excessive inflammation. This function requires SMAD3. Suppresses, or reduces, proinflammatory cytokine production, including IL1A and IL6, as well as CCL12, CSF1, CSF2, CXCL13, IL1B, IL23A and IL1RN, but spares anti-inflammatory cytokines. Inhibits dendritic cell activation.

## Images

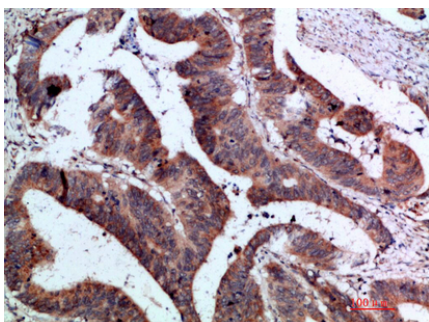
---



Immunohistochemical analysis of paraffin-embedded human-small-intestine, antibody was diluted at 1:200

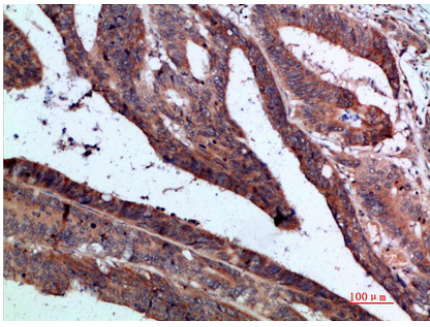


Immunohistochemical analysis of paraffin-embedded human-small-intestine, antibody was diluted at 1:200



Immunohistochemical analysis of paraffin-embedded human-colon-cancer, antibody was diluted at 1:200

Immunohistochemical analysis of paraffin-embedded human-colon-cancer, antibody was diluted at 1:200



Please note: All products are 'FOR RESEARCH USE ONLY. NOT FOR USE IN DIAGNOSTIC OR THERAPEUTIC PROCEDURES'.