

MIP-3 α Polyclonal Antibody

Catalog # AP74138

Product Information

Application	IHC-P
Primary Accession	P78556
Reactivity	Human, Mouse
Host	Rabbit
Clonality	Polyclonal
Calculated MW	10762

Additional Information

Gene ID	6364
Other Names	C-C motif chemokine 20 (Beta-chemokine exodus-1) (CC chemokine LARC) (Liver and activation-regulated chemokine) (Macrophage inflammatory protein 3 alpha) (MIP-3-alpha) (Small-inducible cytokine A20) [Cleaved into: CCL20(1-67); CCL20(1-64); CCL20(2-70)]
Dilution	IHC-P~~N/A
Format	Liquid in PBS containing 50% glycerol, 0.5% BSA and 0.09% (W/V) sodium azide.
Storage Conditions	-20°C

Protein Information

Name	CCL20
Synonyms	LARC, MIP3A, SCYA20
Function	Acts as a ligand for C-C chemokine receptor CCR6. Signals through binding and activation of CCR6 and induces a strong chemotactic response and mobilization of intracellular calcium ions (PubMed: 11035086 , PubMed: 11352563 , PubMed: 20068036). The ligand- receptor pair CCL20-CCR6 is responsible for the chemotaxis of dendritic cells (DC), effector/memory T-cells and B-cells and plays an important role at skin and mucosal surfaces under homeostatic and inflammatory conditions, as well as in pathology, including cancer and various autoimmune diseases (PubMed: 21376174). CCL20 acts as a chemotactic factor that attracts lymphocytes and, slightly, neutrophils, but not monocytes (PubMed: 11352563 , PubMed: 9038201). Involved in the recruitment of both the pro-inflammatory IL17 producing helper T-cells (Th17) and the regulatory T-cells (Treg) to sites of inflammation. Required for optimal migration of thymic natural regulatory T cells (nTregs) and DN1 early thymocyte progenitor cells (By similarity). C- terminal

processed forms have been shown to be equally chemotactically active for leukocytes (PubMed:[11035086](#)). Positively regulates sperm motility and chemotaxis via its binding to CCR6 which triggers Ca²⁺ mobilization in the sperm which is important for its motility (PubMed:[23765988](#), PubMed:[25122636](#)). Inhibits proliferation of myeloid progenitors in colony formation assays (PubMed:[9129037](#)). May be involved in formation and function of the mucosal lymphoid tissues by attracting lymphocytes and dendritic cells towards epithelial cells (By similarity). Possesses antibacterial activity towards E.coli ATCC 25922 and S.aureus ATCC 29213 (PubMed:[12149255](#)).

Cellular Location

Secreted.

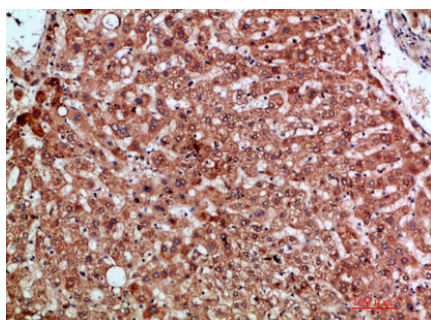
Tissue Location

Expressed in the seminal plasma, endometrial fluid and follicular fluid (at protein level). Expressed predominantly in the liver, lymph nodes, appendix, peripheral blood lymphocytes, and fetal lung. Low levels seen in thymus, prostate, testis, small intestine and colon.

Background

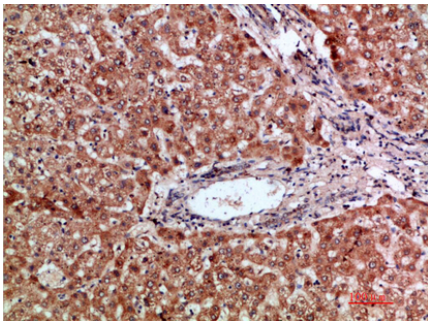
Acts as a ligand for C-C chemokine receptor CCR6. Signals through binding and activation of CCR6 and induces a strong chemotactic response and mobilization of intracellular calcium ions (PubMed:[11352563](#), PubMed:[11035086](#), PubMed:[20068036](#)). The ligand-receptor pair CCL20-CCR6 is responsible for the chemotaxis of dendritic cells (DC), effector/memory T-cells and B- cells and plays an important role at skin and mucosal surfaces under homeostatic and inflammatory conditions, as well as in pathology, including cancer and various autoimmune diseases (PubMed:[21376174](#)). CCL20 acts as a chemotactic factor that attracts lymphocytes and, slightly, neutrophils, but not monocytes (PubMed:[9038201](#), PubMed:[11352563](#)). Involved in the recruitment of both the proinflammatory IL17 producing helper T-cells (Th17) and the regulatory T-cells (Treg) to sites of inflammation. Required for optimal migration of thymic natural regulatory T cells (nTregs) and DN1 early thymocyte progenitor cells (By similarity). C-terminal processed forms have been shown to be equally chemotactically active for leukocytes (PubMed:[11035086](#)). Positively regulates sperm motility and chemotaxis via its binding to CCR6 which triggers Ca²⁺ mobilization in the sperm which is important for its motility (PubMed:[23765988](#), PubMed:[25122636](#)). Inhibits proliferation of myeloid progenitors in colony formation assays (PubMed:[9129037](#)). May be involved in formation and function of the mucosal lymphoid tissues by attracting lymphocytes and dendritic cells towards epithelial cells (By similarity). Possesses antibacterial activity towards E.coli ATCC 25922 and S.aureus ATCC 29213 (PubMed:[12149255](#)).

Images

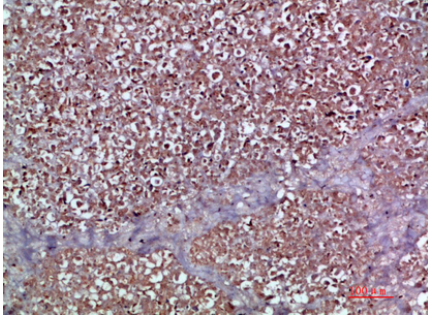


Immunohistochemical analysis of paraffin-embedded human-liver, antibody was diluted at 1:200

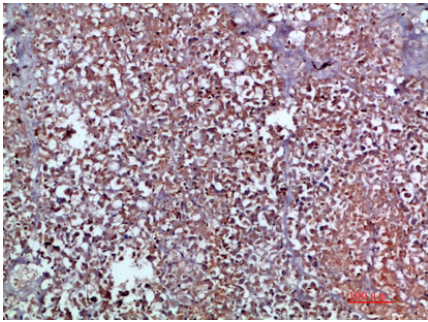
Immunohistochemical analysis of paraffin-embedded human-liver, antibody was diluted at 1:200



Immunohistochemical analysis of paraffin-embedded human-pancreas, antibody was diluted at 1:200



Immunohistochemical analysis of paraffin-embedded human-pancreas, antibody was diluted at 1:200



Please note: All products are 'FOR RESEARCH USE ONLY. NOT FOR USE IN DIAGNOSTIC OR THERAPEUTIC PROCEDURES'.