

# BMP-9 Polyclonal Antibody

Catalog # AP74139

## Product Information

---

<b>Application</b>	IHC-P
<b>Primary Accession</b>	<a href="#">Q9UK05</a>
<b>Reactivity</b>	Human, Mouse
<b>Host</b>	Rabbit
<b>Clonality</b>	Polyclonal
<b>Calculated MW</b>	47320

## Additional Information

---

<b>Gene ID</b>	2658
<b>Other Names</b>	Growth/differentiation factor 2 (GDF-2) (Bone morphogenetic protein 9) (BMP-9)
<b>Dilution</b>	IHC-P~~IHC-p 1:50-200, ELISA 1:10000-20000
<b>Format</b>	Liquid in PBS containing 50% glycerol, 0.5% BSA and 0.09% (W/V) sodium azide.
<b>Storage Conditions</b>	-20°C

## Protein Information

---

<b>Name</b>	GDF2
<b>Synonyms</b>	BMP9
<b>Function</b>	Potent circulating inhibitor of angiogenesis. Signals through the type I activin receptor ACVRL1 but not other Alks. Signaling through SMAD1 in endothelial cells requires TGF-beta coreceptor endoglin/ENG.
<b>Cellular Location</b>	Secreted
<b>Tissue Location</b>	Detected in blood plasma (at protein level).

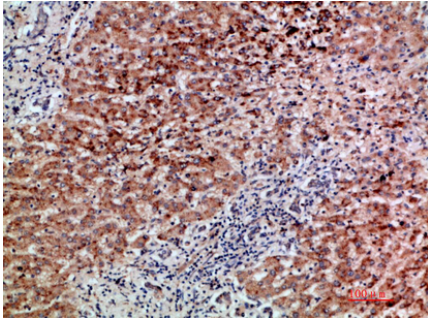
## Background

---

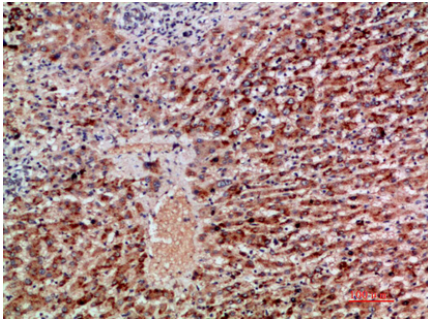
Potent circulating inhibitor of angiogenesis. Signals through the type I activin receptor ACVRL1 but not other Alks. Signaling through SMAD1 in endothelial cells requires TGF-beta coreceptor endoglin/ENG.

## Images

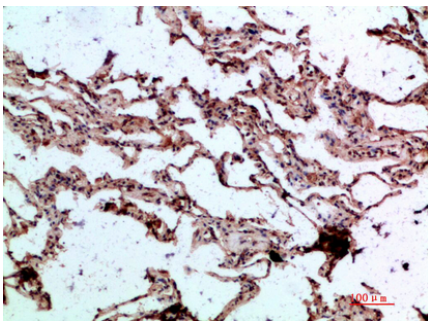
---



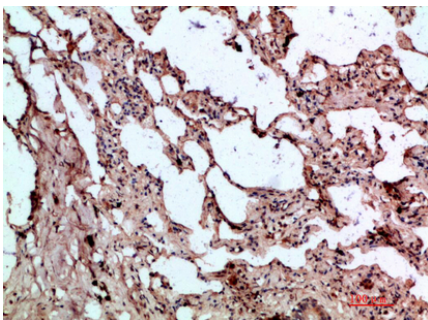
Immunohistochemical analysis of paraffin-embedded human-liver-cancer, antibody was diluted at 1:200



Immunohistochemical analysis of paraffin-embedded human-liver-cancer, antibody was diluted at 1:200



Immunohistochemical analysis of paraffin-embedded human-lung, antibody was diluted at 1:200



Immunohistochemical analysis of paraffin-embedded human-lung, antibody was diluted at 1:200

Please note: All products are 'FOR RESEARCH USE ONLY. NOT FOR USE IN DIAGNOSTIC OR THERAPEUTIC PROCEDURES'.