

HDGF Polyclonal Antibody

Catalog # AP74157

Product Information

Application	IHC-P
Primary Accession	P51858
Reactivity	Human
Host	Rabbit
Clonality	Polyclonal
Calculated MW	26788

Additional Information

Gene ID	3068
Other Names	Hepatoma-derived growth factor (HDGF) (High mobility group protein 1-like 2) (HMG-1L2)
Dilution	IHC-P~~IHC-p 1:50-200, ELISA 1:10000-20000
Format	Liquid in PBS containing 50% glycerol, 0.5% BSA and 0.09% (W/V) sodium azide.
Storage Conditions	-20°C

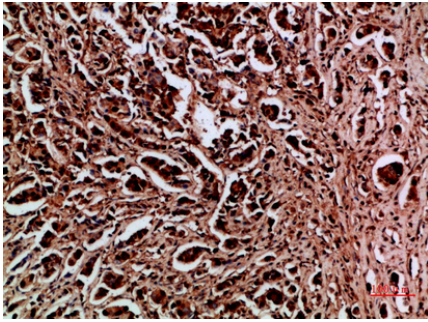
Protein Information

Name	HDGF
Synonyms	HMG1L2
Function	[Isoform 1]: Acts as a transcriptional repressor (PubMed: 17974029). Has mitogenic activity for fibroblasts (PubMed: 11751870 , PubMed: 26845719). Heparin-binding protein (PubMed: 15491618).
Cellular Location	[Isoform 1]: Nucleus. Cytoplasm. Secreted, extracellular exosome. Note=Secreted by exosomes and is located inside the exosome (PubMed:27926477). May also be secreted as free protein via an as yet unknown pathway (PubMed:27926477) [Isoform 3]: Nucleus. Cytoplasm Secreted, extracellular exosome Note=Secreted by exosomes and is located on the outer exosome surface
Tissue Location	Ubiquitous..

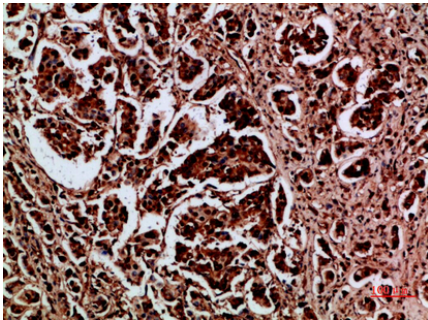
Background

Heparin-binding protein, with mitogenic activity for fibroblasts. Acts as a transcriptional repressor.

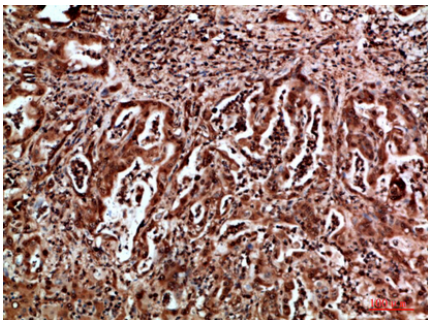
Images



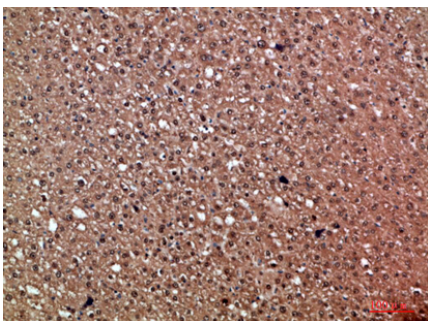
Immunohistochemical analysis of paraffin-embedded human-breast-cancer, antibody was diluted at 1:200



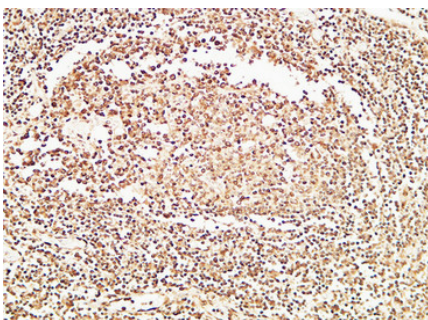
Immunohistochemical analysis of paraffin-embedded human-breast-cancer, antibody was diluted at 1:200



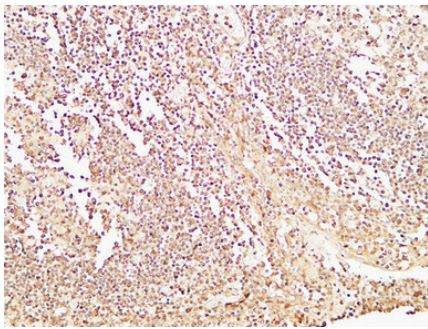
Immunohistochemical analysis of paraffin-embedded human-liver-cancer, antibody was diluted at 1:200



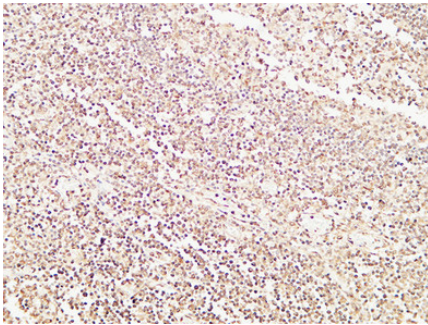
Immunohistochemical analysis of paraffin-embedded human-liver-cancer, antibody was diluted at 1:200



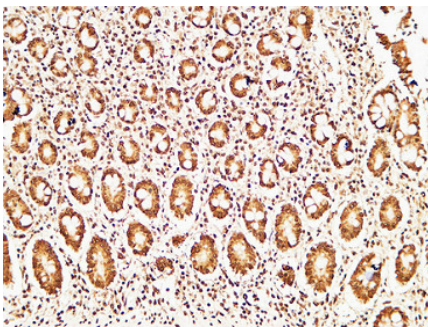
Immunohistochemical analysis of paraffin-embedded Human Amygdala. 1, Antibody was diluted at 1:200(4°,overnight). 2, High-pressure and temperature EDTA, pH8.0 was used for antigen retrieval. 3,Secondary antibody was diluted at 1:200(room temperature, 30min).



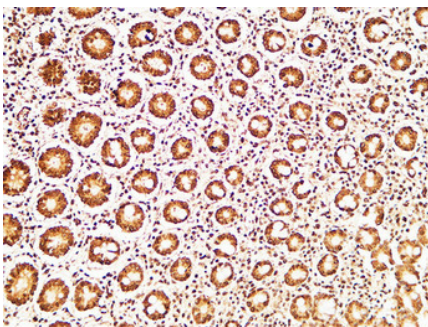
Immunohistochemical analysis of paraffin-embedded Human Amygdala. 1, Antibody was diluted at 1:200(4°,overnight). 2, High-pressure and temperature EDTA, pH8.0 was used for antigen retrieval. 3,Secondary antibody was diluted at 1:200(room temperature, 30min).



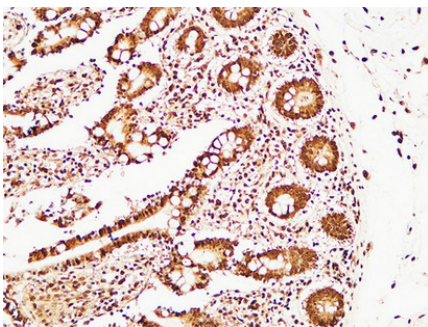
Immunohistochemical analysis of paraffin-embedded Human Amygdala. 1, Antibody was diluted at 1:200(4°,overnight). 2, High-pressure and temperature EDTA, pH8.0 was used for antigen retrieval. 3,Secondary antibody was diluted at 1:200(room temperature, 30min).



Immunohistochemical analysis of paraffin-embedded Human colon. 1, Antibody was diluted at 1:200(4°,overnight). 2, High-pressure and temperature EDTA, pH8.0 was used for antigen retrieval. 3,Secondary antibody was diluted at 1:200(room temperature, 30min).



Immunohistochemical analysis of paraffin-embedded Human colon. 1, Antibody was diluted at 1:200(4°,overnight). 2, High-pressure and temperature EDTA, pH8.0 was used for antigen retrieval. 3,Secondary antibody was diluted at 1:200(room temperature, 30min).



Immunohistochemical analysis of paraffin-embedded Human colon. 1, Antibody was diluted at 1:200(4°,overnight). 2, High-pressure and temperature EDTA, pH8.0 was used for antigen retrieval. 3,Secondary antibody was diluted at 1:200(room temperature, 30min).

Please note: All products are 'FOR RESEARCH USE ONLY. NOT FOR USE IN DIAGNOSTIC OR THERAPEUTIC PROCEDURES'.