

# CTGF Polyclonal Antibody

Catalog # AP74174

## Product Information

Application	IHC-P, IF, ICC, E
Primary Accession	<a href="#">P29279</a>
Reactivity	Human, Mouse, Rat
Host	Rabbit
Clonality	Polyclonal
Calculated MW	38091

## Additional Information

Gene ID	1490
Other Names	Connective tissue growth factor (CCN family member 2) (Hypertrophic chondrocyte-specific protein 24) (Insulin-like growth factor-binding protein 8) (IBP-8) (IGF-binding protein 8) (IGFBP-8)
Dilution	IHC-P~~IHC-p 1:50-200, ELISA 1:10000-20000 IF~~1:50~200 ICC~~N/A E~~N/A
Format	Liquid in PBS containing 50% glycerol, 0.5% BSA and 0.09% (W/V) sodium azide.
Storage Conditions	-20°C

## Protein Information

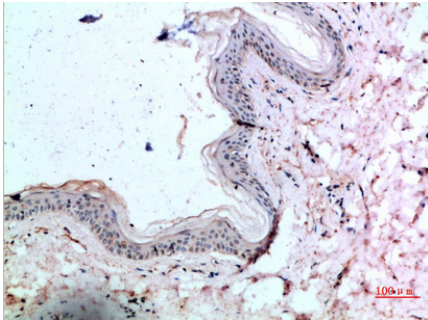
Name	CCN2 ( <a href="#">HGNC:2500</a> )
Function	Major connective tissue mitogen secreted by vascular endothelial cells. Promotes proliferation and differentiation of chondrocytes. Is involved in the stimulation of osteoblast differentiation and has a critical role in osteogenesis (PubMed: <a href="#">39414788</a> ). Mediates heparin- and divalent cation-dependent cell adhesion in many cell types including fibroblasts, myofibroblasts, endothelial and epithelial cells. Enhances fibroblast growth factor- induced DNA synthesis.
Cellular Location	Secreted, extracellular space, extracellular matrix {ECO:0000250 UniProtKB:P29268}. Secreted
Tissue Location	Expressed in bone marrow and thymic cells. Also expressed one of two Wilms tumors tested.

## Background

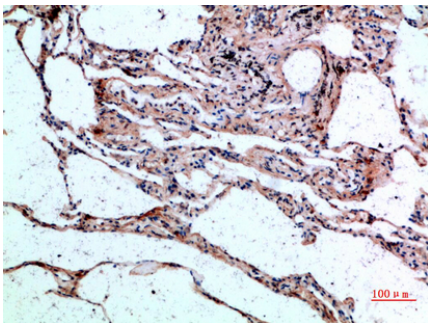
Major connective tissue mitogen secreted by vascular endothelial cells. Promotes proliferation and differentiation of chondrocytes. Mediates heparin- and divalent cation-dependent cell adhesion in many cell types including fibroblasts, myofibroblasts, endothelial and epithelial cells. Enhances fibroblast growth factor-induced DNA synthesis.

## Images

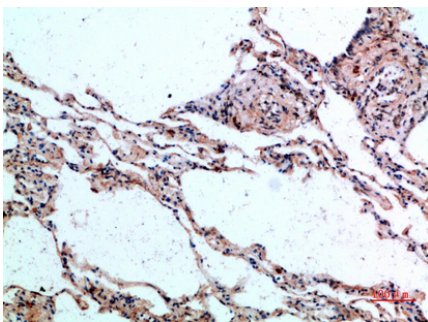
---



Immunohistochemical analysis of paraffin-embedded human-skin, antibody was diluted at 1:200



Immunohistochemical analysis of paraffin-embedded human-lung, antibody was diluted at 1:200



Immunohistochemical analysis of paraffin-embedded human-lung, antibody was diluted at 1:200

Please note: All products are 'FOR RESEARCH USE ONLY. NOT FOR USE IN DIAGNOSTIC OR THERAPEUTIC PROCEDURES'.