

# GSC Polyclonal Antibody

Catalog # AP74177

## Product Information

---

<b>Application</b>	IHC-P
<b>Primary Accession</b>	<a href="#">P56915</a>
<b>Reactivity</b>	Human, Mouse, Rat
<b>Host</b>	Rabbit
<b>Clonality</b>	Polyclonal
<b>Calculated MW</b>	28150

## Additional Information

---

<b>Gene ID</b>	145258
<b>Other Names</b>	Homeobox protein goosecoid
<b>Dilution</b>	IHC-P~~IHC-p 1:50-200, ELISA 1:10000-20000
<b>Format</b>	Liquid in PBS containing 50% glycerol, 0.5% BSA and 0.09% (W/V) sodium azide.
<b>Storage Conditions</b>	-20°C

## Protein Information

---

<b>Name</b>	GSC
<b>Function</b>	Regulates chordin (CHRD). May play a role in spatial programing within discrete embryonic fields or lineage compartments during organogenesis. In concert with NKX3-2, plays a role in defining the structural components of the middle ear; required for the development of the entire tympanic ring (By similarity). Probably involved in the regulatory networks that define neural crest cell fate specification and determine mesoderm cell lineages in mammals.
<b>Cellular Location</b>	Nucleus.

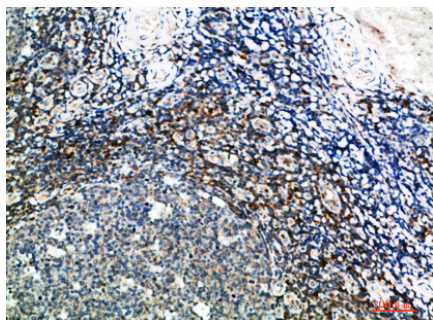
## Background

---

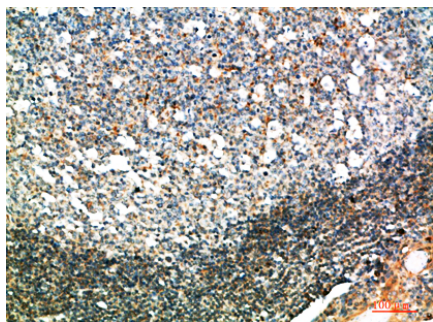
Regulates chordin (CHRD). May play a role in spatial programing within discrete embryonic fields or lineage compartments during organogenesis. In concert with NKX3-2, plays a role in defining the structural components of the middle ear; required for the development of the entire tympanic ring (By similarity). Probably involved in the regulatory networks that define neural crest cell fate specification and determine mesoderm cell lineages in mammals.

## Images

---



Immunohistochemical analysis of paraffin-embedded human-tonsil, antibody was diluted at 1:200



Immunohistochemical analysis of paraffin-embedded human-tonsil, antibody was diluted at 1:200

Please note: All products are 'FOR RESEARCH USE ONLY. NOT FOR USE IN DIAGNOSTIC OR THERAPEUTIC PROCEDURES'.