

EPG5 Polyclonal Antibody

Catalog # AP74180

Product Information

Application	IHC-P
Primary Accession	Q9HCE0
Reactivity	Human
Host	Rabbit
Clonality	Polyclonal
Calculated MW	292481

Additional Information

Gene ID	57724
Other Names	Ectopic P granules protein 5 homolog
Dilution	IHC-P~~IHC-p 1:50-200, ELISA 1:10000-20000
Format	Liquid in PBS containing 50% glycerol, 0.5% BSA and 0.09% (W/V) sodium azide.
Storage Conditions	-20°C

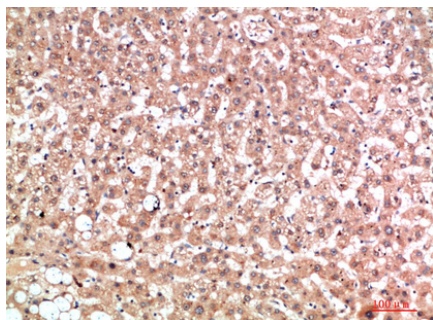
Protein Information

Name	EPG5
Synonyms	KIAA1632
Function	Involved in autophagy. May play a role in a late step of autophagy, such as clearance of autophagosomal cargo. Plays a key role in innate and adaptive immune response triggered by unmethylated cytidine-phosphate-guanosine (CpG) dinucleotides from pathogens, and mediated by the nucleotide-sensing receptor TLR9. It is necessary for the translocation of CpG dinucleotides from early endosomes to late endosomes and lysosomes, where TLR9 is located (PubMed: 29130391).
Cellular Location	Cytoplasm, perinuclear region. Lysosome

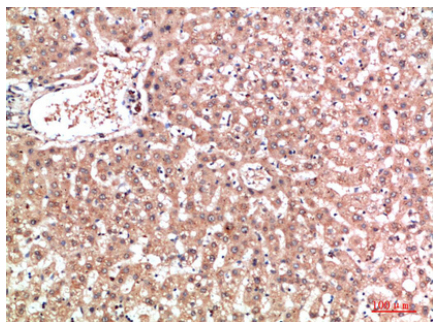
Background

Involved in autophagy. May play a role in a late step of autophagy, such as clearance of autophagosomal cargo.

Images



Immunohistochemical analysis of paraffin-embedded human-liver, antibody was diluted at 1:200



Immunohistochemical analysis of paraffin-embedded human-liver, antibody was diluted at 1:200

Please note: All products are 'FOR RESEARCH USE ONLY. NOT FOR USE IN DIAGNOSTIC OR THERAPEUTIC PROCEDURES'.