

PMCH Polyclonal Antibody

Catalog # AP74187

Product Information

Application	IHC-P
Primary Accession	P20382
Reactivity	Human, Mouse, Rat
Host	Rabbit
Clonality	Polyclonal
Calculated MW	18679

Additional Information

Gene ID	5367
Other Names	Pro-MCH [Cleaved into: Neuropeptide-glycine-glutamic acid (NGE) (Neuropeptide G-E); Neuropeptide-glutamic acid-isoleucine (NEI) (Neuropeptide E-I); Melanin-concentrating hormone (MCH)]
Dilution	IHC-P~~N/A
Format	Liquid in PBS containing 50% glycerol, 0.5% BSA and 0.09% (W/V) sodium azide.
Storage Conditions	-20°C

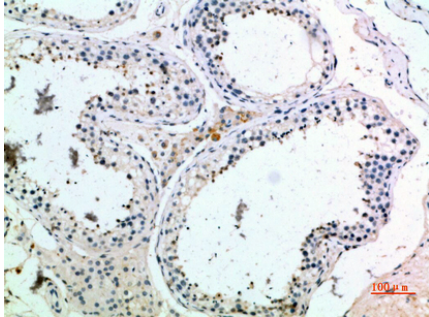
Protein Information

Name	PMCH
Synonyms	MCH
Function	MCH may act as a neurotransmitter or neuromodulator in a broad array of neuronal functions directed toward the regulation of goal-directed behavior, such as food intake, and general arousal. May also have a role in spermatocyte differentiation.
Cellular Location	Secreted.
Tissue Location	Predominantly expressed in lateral hypothalamus, also detected in pallidum, neocortex and cerebellum. Also found in thymus, brown adipose tissue, duodenum and testis (spermatogonia, early spermatocytes and Sertoli cells). No expression in peripheral blood. In brain exclusively mature MCH and NEI peptides are present. In peripheral tissues a large product, encompassing the NEI and MCH domains of the precursor, is found predominantly

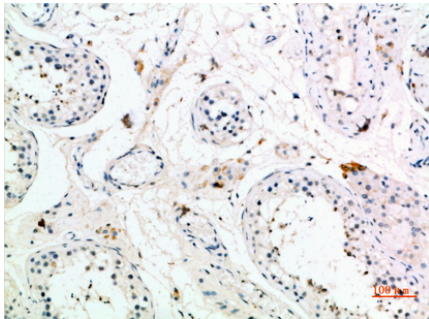
Background

MCH may act as a neurotransmitter or neuromodulator in a broad array of neuronal functions directed toward the regulation of goal-directed behavior, such as food intake, and general arousal. May also have a role in spermatocyte differentiation.

Images



Immunohistochemical analysis of paraffin-embedded human-testis, antibody was diluted at 1:200



Immunohistochemical analysis of paraffin-embedded human-testis, antibody was diluted at 1:200

Please note: All products are 'FOR RESEARCH USE ONLY. NOT FOR USE IN DIAGNOSTIC OR THERAPEUTIC PROCEDURES'.