

Tubulin γ Polyclonal Antibody

Catalog # AP74194

Product Information

Application	IHC-P
Primary Accession	P23258
Reactivity	Human, Mouse, Rat
Host	Rabbit
Clonality	Polyclonal
Calculated MW	51170

Additional Information

Gene ID	7283
Other Names	Tubulin gamma-1 chain (Gamma-1-tubulin) (Gamma-tubulin complex component 1) (GCP-1)
Dilution	IHC-P~~N/A
Format	Liquid in PBS containing 50% glycerol, 0.5% BSA and 0.09% (W/V) sodium azide.
Storage Conditions	-20°C

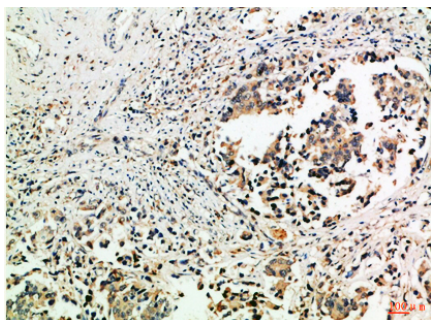
Protein Information

Name	TUBG1 (HGNC:12417)
Synonyms	TUBG
Function	Tubulin is the major constituent of microtubules, protein filaments consisting of alpha- and beta-tubulin heterodimers (PubMed: 38305685 , PubMed: 38609661 , PubMed: 39321809). Gamma-tubulin is a key component of the gamma-tubulin ring complex (gTuRC) which mediates microtubule nucleation (PubMed: 38305685 , PubMed: 38609661 , PubMed: 39321809). The gTuRC regulates the minus-end nucleation of alpha-beta tubulin heterodimers that grow into microtubule protofilaments, a critical step in centrosome duplication and spindle formation (PubMed: 38305685 , PubMed: 38609661 , PubMed: 39321809).
Cellular Location	Cytoplasm, cytoskeleton, microtubule organizing center, centrosome. Cytoplasm, cytoskeleton, spindle. Note=Localizes to mitotic spindle microtubules.

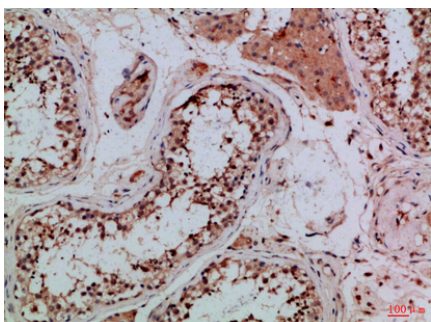
Background

Tubulin is the major constituent of microtubules. The gamma chain is found at microtubule organizing centers (MTOC) such as the spindle poles or the centrosome. Pericentriolar matrix component that regulates alpha/beta chain minus-end nucleation, centrosome duplication and spindle formation.

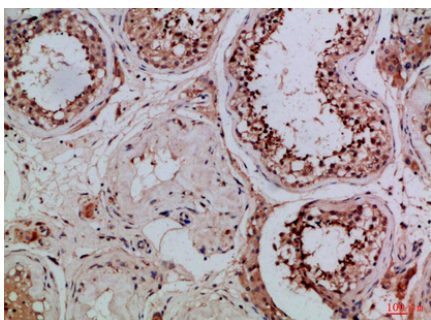
Images



Immunohistochemical analysis of paraffin-embedded Human-breast-cancer, antibody was diluted at 1:100



Immunohistochemical analysis of paraffin-embedded Human-testis, antibody was diluted at 1:100



Immunohistochemical analysis of paraffin-embedded Human-testis, antibody was diluted at 1:100

Please note: All products are 'FOR RESEARCH USE ONLY. NOT FOR USE IN DIAGNOSTIC OR THERAPEUTIC PROCEDURES'.