

# Insulin Polyclonal Antibody

Catalog # AP74200

## Product Information

---

Application	IHC-P
Primary Accession	<a href="#">P01308</a>
Reactivity	Human, Mouse, Rat
Host	Rabbit
Clonality	Polyclonal
Calculated MW	11981

## Additional Information

---

Gene ID	3630
Other Names	Insulin [Cleaved into: Insulin B chain; Insulin A chain]
Dilution	IHC-P~~N/A
Format	Liquid in PBS containing 50% glycerol, 0.5% BSA and 0.09% (W/V) sodium azide.
Storage Conditions	-20°C

## Protein Information

---

Name	INS
Function	Insulin decreases blood glucose concentration. It increases cell permeability to monosaccharides, amino acids and fatty acids. It accelerates glycolysis, the pentose phosphate cycle, and glycogen synthesis in liver.
Cellular Location	Secreted.

## Background

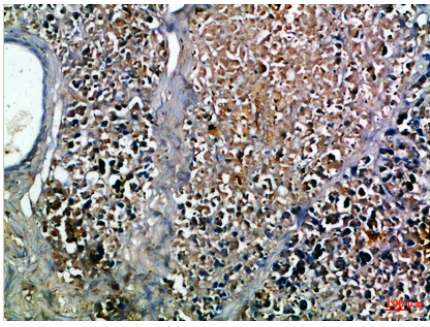
---

Insulin decreases blood glucose concentration. It increases cell permeability to monosaccharides, amino acids and fatty acids. It accelerates glycolysis, the pentose phosphate cycle, and glycogen synthesis in liver.

## Images

---

Immunohistochemical analysis of paraffin-embedded Human-pancreas, antibody was diluted at 1:100



Please note: All products are 'FOR RESEARCH USE ONLY. NOT FOR USE IN DIAGNOSTIC OR THERAPEUTIC PROCEDURES'.