

CD158f1/2 Polyclonal Antibody

Catalog # AP74217

Product Information

Application	IHC-P
Primary Accession	Q8N109 , Q8NHK3
Reactivity	Human
Host	Rabbit
Clonality	Polyclonal
Calculated MW	40678

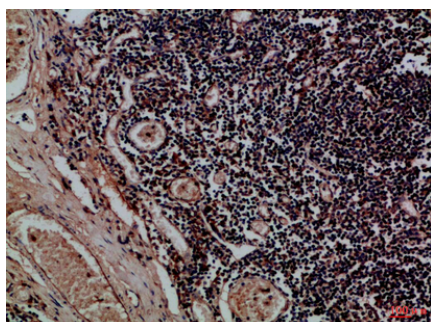
Additional Information

Gene ID	57292
Dilution	IHC-P~~IHC-p 1:50-200, ELISA 1:10000-20000
Format	Liquid in PBS containing 50% glycerol, 0.5% BSA and 0.09% (W/V) sodium azide.
Storage Conditions	-20°C

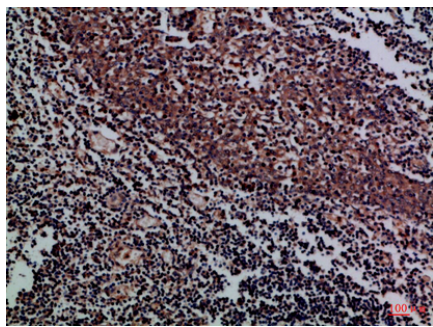
Protein Information

Name	KIR2DL5A
Synonyms	CD158F, CD158F1, KIR2DL5
Function	Receptor on natural killer (NK) cells for HLA-C alleles. Inhibits the activity of NK cells thus preventing cell lysis.
Cellular Location	Cell membrane; Single-pass type I membrane protein

Images



Immunohistochemical analysis of paraffin-embedded Human-tonsil, antibody was diluted at 1:100



Immunohistochemical analysis of paraffin-embedded Human-tonsil, antibody was diluted at 1:100

Please note: All products are 'FOR RESEARCH USE ONLY. NOT FOR USE IN DIAGNOSTIC OR THERAPEUTIC PROCEDURES'.