

# OPN Polyclonal Antibody

Catalog # AP74227

## Product Information

---

<b>Application</b>	IHC-P
<b>Primary Accession</b>	<a href="#">P10451</a>
<b>Reactivity</b>	Human, Mouse, Rat
<b>Host</b>	Rabbit
<b>Clonality</b>	Polyclonal
<b>Calculated MW</b>	35423

## Additional Information

---

<b>Gene ID</b>	6696
<b>Other Names</b>	Osteopontin (Bone sialoprotein 1) (Nephropontin) (Secreted phosphoprotein 1) (SPP-1) (Urinary stone protein) (Uropontin)
<b>Dilution</b>	IHC-P~~N/A
<b>Format</b>	Liquid in PBS containing 50% glycerol, 0.5% BSA and 0.09% (W/V) sodium azide.
<b>Storage Conditions</b>	-20°C

## Protein Information

---

<b>Name</b>	SPP1
<b>Synonyms</b>	BNSP, OPN
<b>Function</b>	Major non-collagenous bone protein that binds tightly to hydroxyapatite. Appears to form an integral part of the mineralized matrix. Probably important to cell-matrix interaction.
<b>Cellular Location</b>	Secreted
<b>Tissue Location</b>	Detected in cerebrospinal fluid and urine (at protein level) (PubMed:25326458, PubMed:36213313, PubMed:37453717) Bone. Found in plasma.

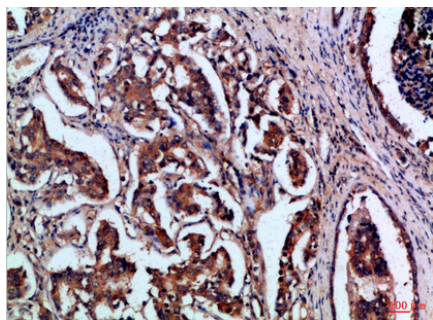
## Background

---

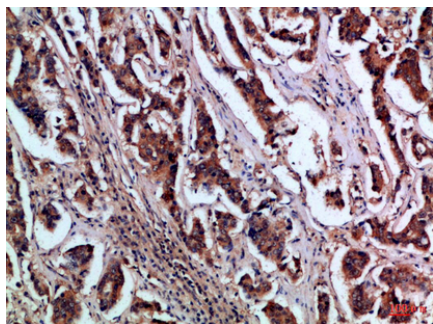
Binds tightly to hydroxyapatite. Appears to form an integral part of the mineralized matrix. Probably important to cell-matrix interaction.

## Images

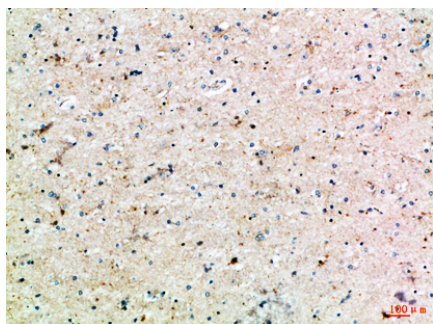
---



Immunohistochemical analysis of paraffin-embedded Human-breast-cancer, antibody was diluted at 1:100



Immunohistochemical analysis of paraffin-embedded Human-breast-cancer, antibody was diluted at 1:100



Immunohistochemical analysis of paraffin-embedded Human-brain, antibody was diluted at 1:100

Please note: All products are 'FOR RESEARCH USE ONLY. NOT FOR USE IN DIAGNOSTIC OR THERAPEUTIC PROCEDURES'.