

# IL-17D Polyclonal Antibody

Catalog # AP74231

## Product Information

---

<b>Application</b>	IHC-P, IF, ICC, E
<b>Primary Accession</b>	<a href="#">Q8TAD2</a>
<b>Reactivity</b>	Human, Rat, Mouse
<b>Host</b>	Rabbit
<b>Clonality</b>	Polyclonal
<b>Calculated MW</b>	21893

## Additional Information

---

<b>Gene ID</b>	53342
<b>Other Names</b>	Interleukin-17D (IL-17D) (Interleukin-27) (IL-27)
<b>Dilution</b>	IHC-P~~IHC-p 1:50-200, ELISA 1:10000-20000 IF~~1:50~200 ICC~~N/A E~~N/A
<b>Format</b>	Liquid in PBS containing 50% glycerol, 0.5% BSA and 0.09% (W/V) sodium azide.
<b>Storage Conditions</b>	-20°C

## Protein Information

---

<b>Name</b>	IL17D
<b>Function</b>	Induces expression of IL6, CXCL8/IL8, and CSF2/GM-CSF from endothelial cells.
<b>Cellular Location</b>	Secreted.
<b>Tissue Location</b>	Expressed preferentially in adipose, skeletal muscle and CNS.

## Background

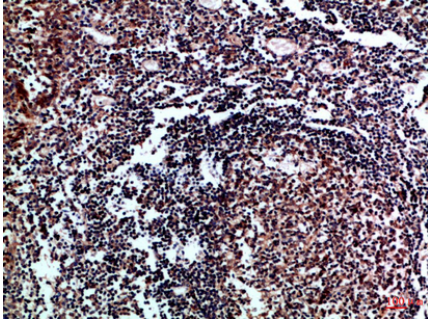
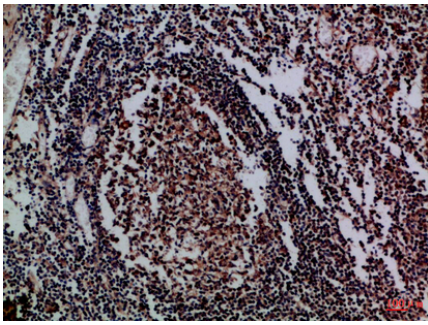
---

Induces expression of IL6, CXCL8/IL8, and CSF2/GM-CSF from endothelial cells.

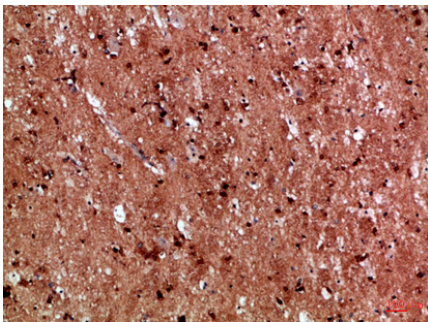
## Images

---

Immunohistochemical analysis of paraffin-embedded  
Human-tonsil, antibody was diluted at 1:100



Immunohistochemical analysis of paraffin-embedded Human-tonsil, antibody was diluted at 1:100



Immunohistochemical analysis of paraffin-embedded Human-brain, antibody was diluted at 1:100

Please note: All products are 'FOR RESEARCH USE ONLY. NOT FOR USE IN DIAGNOSTIC OR THERAPEUTIC PROCEDURES'.