

APOD Antibody (N-term)

Purified Rabbit Polyclonal Antibody (Pab)

Catalog # AP7423a

Product Information

Application	WB, E
Primary Accession	P05090
Other Accession	P23593 , P37153 , P51910
Reactivity	Human, Rat, Mouse
Predicted	Rabbit, Rat
Host	Rabbit
Clonality	Polyclonal
Isotype	Rabbit IgG
Clone Names	RB15173
Calculated MW	21276
Antigen Region	26-53

Additional Information

Gene ID	347
Other Names	Apolipoprotein D, Apo-D, ApoD, APOD
Target/Specificity	This APOD antibody is generated from rabbits immunized with a KLH conjugated synthetic peptide between 26-53 amino acids from the N-terminal region of human APOD.
Dilution	WB~~1:1000 E~~Use at an assay dependent concentration.
Format	Purified polyclonal antibody supplied in PBS with 0.09% (W/V) sodium azide. This antibody is prepared by Saturated Ammonium Sulfate (SAS) precipitation followed by dialysis against PBS.
Storage	Maintain refrigerated at 2-8°C for up to 2 weeks. For long term storage store at -20°C in small aliquots to prevent freeze-thaw cycles.
Precautions	APOD Antibody (N-term) is for research use only and not for use in diagnostic or therapeutic procedures.

Protein Information

Name	APOD
Function	APOD occurs in the macromolecular complex with lecithin- cholesterol acyltransferase. It is probably involved in the transport and binding of bilin. Appears to be able to transport a variety of ligands in a number of different

contexts.

Cellular Location

Secreted.

Tissue Location

Expressed in liver, intestine, pancreas, kidney, placenta, adrenal, spleen, fetal brain tissue and tears

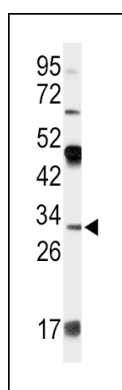
Background

APOD is a component of high density lipoprotein that has no marked similarity to other apolipoprotein sequences. It has a high degree of homology to plasma retinol-binding protein and other members of the alpha 2 microglobulin protein superfamily of carrier proteins, also known as lipocalins. This glycoprotein is closely associated with the enzyme lecithin:cholesterol acyltransferase - an enzyme involved in lipoprotein metabolism.

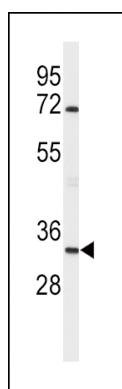
References

Do Carmo,S., J. Neurosci. 28 (41), 10330-10338 (2008)
Chen,Y., Brain Res. 1233, 196-202 (2008)
Wei,Y.J., Biomarkers 13 (5), 535-548 (2008)

Images

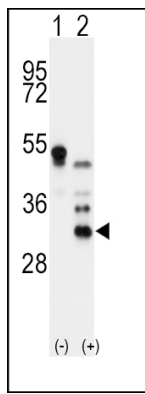


Western blot analysis of APOD Antibody (N-term) (Cat. #AP7423a) in 293 cell line lysates (35ug/lane). APOD (arrow) was detected using the purified Pab.



Western blot analysis of APOD Antibody (N-term) (Cat. #AP7423a) in mouse brain tissue lysates (35ug/lane). APOD (arrow) was detected using the purified Pab.

Western blot analysis of APOD (arrow) using rabbit polyclonal APOD Antibody (N-term) (Cat. #AP7423a) 293 cell lysates (2 ug/lane) either nontransfected (Lane 1) or transiently transfected with the APOD gene (Lane 2) .



Please note: All products are 'FOR RESEARCH USE ONLY. NOT FOR USE IN DIAGNOSTIC OR THERAPEUTIC PROCEDURES'.