

Collagen I Polyclonal Antibody

Catalog # AP74240

Product Information

Application	WB
Primary Accession	P08123
Reactivity	Human, Mouse, Rat
Host	Rabbit
Clonality	Polyclonal
Calculated MW	129314

Additional Information

Gene ID	1278
Other Names	Collagen alpha-2(I) chain (Alpha-2 type I collagen)
Dilution	WB~~WB 1:500-2000, ELISA 1:10000-20000
Format	Liquid in PBS containing 50% glycerol, 0.5% BSA and 0.09% (W/V) sodium azide.
Storage Conditions	-20°C

Protein Information

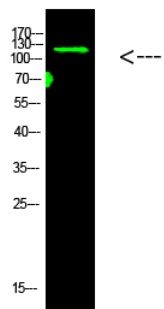
Name	COL1A2
Function	Type I collagen is a member of group I collagen (fibrillar forming collagen).
Cellular Location	Secreted, extracellular space, extracellular matrix {ECO:0000255 PROSITE-ProRule:PRU00793}
Tissue Location	Forms the fibrils of tendon, ligaments and bones. In bones the fibrils are mineralized with calcium hydroxyapatite

Background

Type I collagen is a member of group I collagen (fibrillar forming collagen).

Images

Western Blot analysis of mouse-brain cells using primary antibody diluted at 1:1000(4°C overnight). Secondary



antibody : Goat Anti-rabbit IgG IRDye 800(diluted at 1:5000, 25°C, 1 hour)

Please note: All products are 'FOR RESEARCH USE ONLY. NOT FOR USE IN DIAGNOSTIC OR THERAPEUTIC PROCEDURES'.