

Cardiotrophin-1 Polyclonal Antibody

Catalog # AP74246

Product Information

Application	WB, E
Primary Accession	Q16619
Reactivity	Human, Mouse, Rat
Host	Rabbit
Clonality	Polyclonal
Calculated MW	21227

Additional Information

Gene ID	1489
Other Names	Cardiotrophin-1 (CT-1)
Dilution	WB~~WB 1:500-2000, ELISA 1:10000-20000 E~~N/A
Format	Liquid in PBS containing 50% glycerol, 0.5% BSA and 0.09% (W/V) sodium azide.
Storage Conditions	-20°C

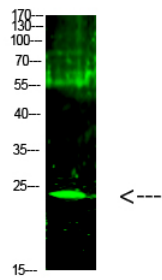
Protein Information

Name	CTF1
Function	Induces cardiac myocyte hypertrophy in vitro. Binds to and activates the ILST/gp130 receptor.
Cellular Location	Secreted.
Tissue Location	Highly expressed in heart, skeletal muscle, prostate and ovary. Lower levels in lung, kidney, pancreas, thymus, testis and small intestine. Little or no expression in brain, placenta, liver, spleen, colon or peripheral blood leukocytes

Background

Induces cardiac myocyte hypertrophy in vitro. Binds to and activates the ILST/gp130 receptor.

Images



Western Blot analysis of 1, mouse-kidney cells using primary antibody diluted at 1:1000 (4°C overnight). Secondary antibody : Goat Anti-rabbit IgG IRDye 800 (diluted at 1:5000, 25°C, 1 hour)

Please note: All products are 'FOR RESEARCH USE ONLY. NOT FOR USE IN DIAGNOSTIC OR THERAPEUTIC PROCEDURES'.