

# Thioredoxin Polyclonal Antibody

Catalog # AP74248

## Product Information

Application	WB, IHC-P, IF, ICC, E
Primary Accession	<a href="#">P10599</a>
Reactivity	Human, Mouse, Rat
Host	Rabbit
Clonality	Polyclonal
Calculated MW	11737

## Additional Information

Gene ID	7295
Other Names	Thioredoxin (Trx) (ATL-derived factor) (ADF) (Surface-associated sulphydryl protein) (SASP)
Dilution	WB~~IHC-p: 100-300.WB 1:500-2000, ELISA 1:10000-20000 IHC-P~~IHC-p: 100-300.WB 1:500-2000, ELISA 1:10000-20000 IF~~1:50~200 ICC~~N/A E~~N/A
Format	Liquid in PBS containing 50% glycerol, 0.5% BSA and 0.09% (W/V) sodium azide.
Storage Conditions	-20°C

## Protein Information

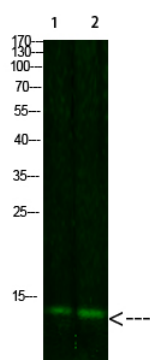
Name	TXN
Synonyms	TRDX, TRX, TRX1
Function	Participates in various redox reactions through the reversible oxidation of its active center dithiol to a disulfide and catalyzes dithiol-disulfide exchange reactions (PubMed: <a href="#">17182577</a> , PubMed: <a href="#">19032234</a> , PubMed: <a href="#">2176490</a> ). Plays a role in the reversible S- nitrosylation of cysteine residues in target proteins, and thereby contributes to the response to intracellular nitric oxide. Nitrosylates the active site Cys of CASP3 in response to nitric oxide (NO), and thereby inhibits caspase-3 activity (PubMed: <a href="#">16408020</a> , PubMed: <a href="#">17606900</a> ). Induces the FOS/JUN AP-1 DNA-binding activity in ionizing radiation (IR) cells through its oxidation/reduction status and stimulates AP-1 transcriptional activity (PubMed: <a href="#">11118054</a> , PubMed: <a href="#">9108029</a> ).
Cellular Location	Nucleus. Cytoplasm. Secreted Note=Translocates from the cytoplasm into the nucleus after phorbol 12- myristate 13-acetate induction (PMA) (PubMed:9108029). Predominantly in the cytoplasm in non irradiated cells (PubMed:11118054). Radiation induces translocation of TRX from the

cytoplasm to the nucleus (PubMed:11118054). Secreted by a leaderless secretory pathway (PubMed:1332947).

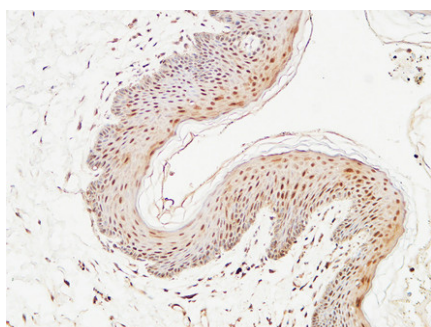
## Background

Participates in various redox reactions through the reversible oxidation of its active center dithiol to a disulfide and catalyzes dithiol-disulfide exchange reactions. Plays a role in the reversible S-nitrosylation of cysteine residues in target proteins, and thereby contributes to the response to intracellular nitric oxide. Nitrosylates the active site Cys of CASP3 in response to nitric oxide (NO), and thereby inhibits caspase-3 activity. Induces the FOS/JUN AP-1 DNA-binding activity in ionizing radiation (IR) cells through its oxidation/reduction status and stimulates AP-1 transcriptional activity.

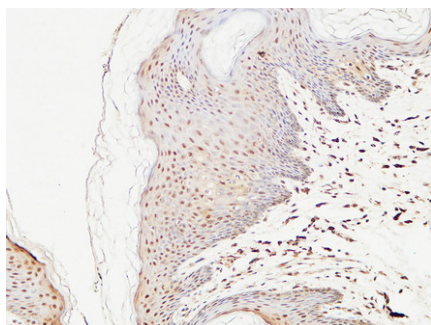
## Images



Western Blot analysis of 1,mouse-liver 2,hela cells using primary antibody diluted at 1:1000(4°C overnight). Secondary antibody : Goat Anti-rabbit IgG IRDye 800( diluted at 1:5000, 25°C, 1 hour)

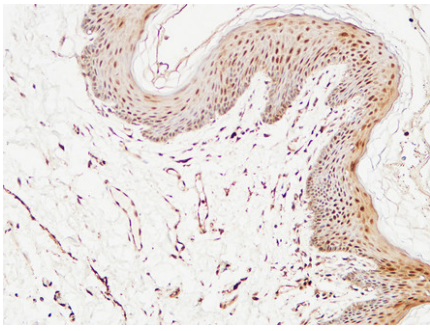


Immunohistochemical analysis of paraffin-embedded Human skin. 1, Antibody was diluted at 1:400(4°,overnight). 2, High-pressure and temperature EDTA, pH8.0 was used for antigen retrieval. 3,Secondary antibody was diluted at 1:200(room temperature, 30min).



Immunohistochemical analysis of paraffin-embedded Human skin. 1, Antibody was diluted at 1:400(4°,overnight). 2, High-pressure and temperature EDTA, pH8.0 was used for antigen retrieval. 3,Secondary antibody was diluted at 1:200(room temperature, 30min).

Immunohistochemical analysis of paraffin-embedded Human skin. 1, Antibody was diluted at 1:400(4°,overnight). 2, High-pressure and temperature EDTA, pH8.0 was used for antigen retrieval. 3,Secondary antibody was diluted at 1:200(room temperature, 30min).



Please note: All products are 'FOR RESEARCH USE ONLY. NOT FOR USE IN DIAGNOSTIC OR THERAPEUTIC PROCEDURES'.