

# GLI-1 Polyclonal Antibody

Catalog # AP74256

## Product Information

---

Application	WB
Primary Accession	<a href="#">P08151</a>
Reactivity	Human, Mouse
Host	Rabbit
Clonality	Polyclonal
Calculated MW	117904

## Additional Information

---

Gene ID	2735
Other Names	Zinc finger protein GLI1 (Glioma-associated oncogene) (Oncogene GLI)
Dilution	WB~~WB 1:500-2000, ELISA 1:10000-20000
Format	Liquid in PBS containing 50% glycerol, 0.5% BSA and 0.09% (W/V) sodium azide.
Storage Conditions	-20°C

## Protein Information

---

Name	GLI1
Synonyms	GLI
Function	Acts as a transcriptional activator (PubMed: <a href="#">10806483</a> , PubMed: <a href="#">19706761</a> , PubMed: <a href="#">19878745</a> , PubMed: <a href="#">24076122</a> , PubMed: <a href="#">24217340</a> , PubMed: <a href="#">24311597</a> ). Binds to the DNA consensus sequence 5'-GACCACCCA-3' (PubMed: <a href="#">2105456</a> , PubMed: <a href="#">24217340</a> , PubMed: <a href="#">8378770</a> ). Regulates the transcription of specific genes during normal development (PubMed: <a href="#">19706761</a> ). Plays a role in craniofacial development and digital development, as well as development of the central nervous system and gastrointestinal tract. Mediates SHH signaling (PubMed: <a href="#">19706761</a> , PubMed: <a href="#">28973407</a> ). Plays a role in cell proliferation and differentiation via its role in SHH signaling (PubMed: <a href="#">11238441</a> , PubMed: <a href="#">28973407</a> ).
Cellular Location	Cytoplasm. Nucleus. Note=Tethered in the cytoplasm by binding to SUFU (PubMed:10806483). Activation and translocation to the nucleus is promoted by interaction with STK36 (PubMed:10806483). Phosphorylation by ULK3 may promote nuclear localization (PubMed:19878745). Translocation to the nucleus is promoted by interaction with ZIC1 (PubMed:11238441)

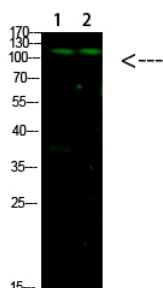
## Tissue Location

Detected in testis (at protein level) (PubMed:2105456). Testis, myometrium and fallopian tube. Also expressed in the brain with highest expression in the cerebellum, optic nerve and olfactory tract (PubMed:19878745). Isoform 1 is detected in brain, spleen, pancreas, liver, kidney and placenta; isoform 2 is not detectable in these tissues (PubMed:19706761)

## Background

Acts as a transcriptional activator (PubMed: [19706761](#), PubMed:[10806483](#), PubMed:[19878745](#), PubMed:[24311597](#), PubMed:[24217340](#)). Binds to the DNA consensus sequence 5'- GACCACCCA-3' (PubMed:[2105456](#), PubMed:[8378770](#), PubMed:[24217340](#)). May regulate the transcription of specific genes during normal development (PubMed:[19706761](#)). May play a role in craniofacial development and digital development, as well as development of the central nervous system and gastrointestinal tract. Mediates SHH signaling (PubMed:[19706761](#)). Plays a role in cell proliferation and differentiation via its role in SHH signaling (Probable).

## Images



Western Blot analysis of 1,mouse-liver 2,hela cells using primary antibody diluted at 1:1000(4°C overnight). Secondary antibody : Goat Anti-rabbit IgG IRDye 800( diluted at 1:5000, 25°C, 1 hour)

Please note: All products are 'FOR RESEARCH USE ONLY. NOT FOR USE IN DIAGNOSTIC OR THERAPEUTIC PROCEDURES'.