

Integrin β 7 Polyclonal Antibody

Catalog # AP74263

Product Information

Application	WB, E, IHC-P
Primary Accession	P26010
Reactivity	Human, Mouse
Host	Rabbit
Clonality	Polyclonal
Calculated MW	86903

Additional Information

Gene ID	3695
Other Names	Integrin beta-7 (Gut homing receptor beta subunit)
Dilution	WB~~WB 1:500-2000, ELISA 1:10000-20000 E~~N/A IHC-P~~N/A
Format	Liquid in PBS containing 50% glycerol, 0.5% BSA and 0.09% (W/V) sodium azide.
Storage Conditions	-20°C

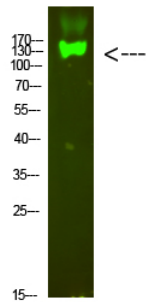
Protein Information

Name	ITGB7
Function	Integrin ITGA4/ITGB7 (alpha-4/beta-7) (Peyer patches-specific homing receptor LPAM-1) is an adhesion molecule that mediates lymphocyte migration and homing to gut-associated lymphoid tissue (GALT) (Probable). Integrin ITGA4/ITGB7 interacts with the cell surface adhesion molecules MADCAM1 which is normally expressed by the vascular endothelium of the gastrointestinal tract (PubMed: 10837471 , PubMed: 14608374). Also interacts with VCAM1 and fibronectin, an extracellular matrix component (Probable). It recognizes one or more domains within the alternatively spliced CS-1 region of fibronectin (Probable). Interactions involve the tripeptide L-D-T in MADCAM1, and L-D-V in fibronectin (Probable). Integrin ITGAE/ITGB7 (alpha-E/beta-7, HML-1) is a receptor for E-cadherin (PubMed: 10837471).
Cellular Location	Cell membrane; Single-pass type I membrane protein
Tissue Location	Expressed in a variety of leukocyte lines.

Background

Integrin alpha-4/beta-7 (Peyer patches-specific homing receptor LPAM-1) is an adhesion molecule that mediates lymphocyte migration and homing to gut-associated lymphoid tissue (GALT). Integrin alpha-4/beta-7 interacts with the cell surface adhesion molecules MADCAM1 which is normally expressed by the vascular endothelium of the gastrointestinal tract. Interacts also with VCAM1 and fibronectin, an extracellular matrix component. It recognizes one or more domains within the alternatively spliced CS-1 region of fibronectin. Interactions involves the tripeptide L-D-T in MADCAM1, and L-D-V in fibronectin. Binds to HIV-1 gp120, thereby allowing the virus to enter GALT, which is thought to be the major trigger of AIDS disease. Interaction would involve a tripeptide L-D-I in HIV-1 gp120. Integrin alpha-E/beta-7 (HML-1) is a receptor for E-cadherin.

Images



Western Blot analysis of mouse-heart cells using primary antibody diluted at 1:1000(4°C overnight). Secondary antibody : Goat Anti-rabbit IgG IRDye 800(diluted at 1:5000, 25°C, 1 hour)

Please note: All products are 'FOR RESEARCH USE ONLY. NOT FOR USE IN DIAGNOSTIC OR THERAPEUTIC PROCEDURES'.