

Dlx-2 Polyclonal Antibody

Catalog # AP74264

Product Information

| | |
|--------------------------|------------------------|
| Application | WB, E |
| Primary Accession | Q07687 |
| Reactivity | Human, Mouse, Rat |
| Host | Rabbit |
| Clonality | Polyclonal |
| Calculated MW | 34243 |

Additional Information

| | |
|---------------------------|---|
| Gene ID | 1746 |
| Other Names | Homeobox protein DLX-2 |
| Dilution | WB~~WB 1:500-2000, ELISA 1:10000-20000 E~~N/A |
| Format | Liquid in PBS containing 50% glycerol, 0.5% BSA and 0.09% (W/V) sodium azide. |
| Storage Conditions | -20°C |

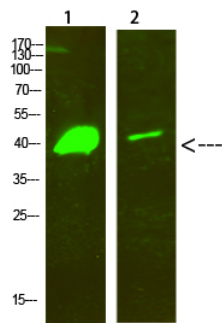
Protein Information

| | |
|--------------------------|---|
| Name | DLX2 |
| Function | Acts as a transcriptional activator (By similarity). Activates transcription of CGA/alpha-GSU, via binding to the downstream activin regulatory element (DARE) in the gene promoter (By similarity). Plays a role in terminal differentiation of interneurons, such as amacrine and bipolar cells in the developing retina. Likely to play a regulatory role in the development of the ventral forebrain (By similarity). May play a role in craniofacial patterning and morphogenesis (By similarity). |
| Cellular Location | Nucleus. |

Background

Acts as a transcriptional activator. Plays a role in terminal differentiation of interneurons, such as amacrine and bipolar cells in the developing retina. Likely to play a regulatory role in the development of the ventral forebrain. May play a role in craniofacial patterning and morphogenesis.

Images



Western Blot analysis of 1,hela 2,mouse-brain cells using primary antibody diluted at 1:500(4°C overnight).
Secondary antibody : Goat Anti-rabbit IgG IRDye 800(diluted at 1:5000, 25°C, 1 hour)

Please note: All products are 'FOR RESEARCH USE ONLY. NOT FOR USE IN DIAGNOSTIC OR THERAPEUTIC PROCEDURES'.