

COL19A1 Polyclonal Antibody

Catalog # AP74270

Product Information

| | |
|--------------------------|------------------------|
| Application | WB |
| Primary Accession | Q14993 |
| Reactivity | Human |
| Host | Rabbit |
| Clonality | Polyclonal |
| Calculated MW | 115221 |

Additional Information

| | |
|---------------------------|---|
| Gene ID | 1310 |
| Other Names | Collagen alpha-1(XIX) chain (Collagen alpha-1(Y) chain) |
| Dilution | WB~~WB 1:500-2000, ELISA 1:10000-20000 |
| Format | Liquid in PBS containing 50% glycerol, 0.5% BSA and 0.09% (W/V) sodium azide. |
| Storage Conditions | -20°C |

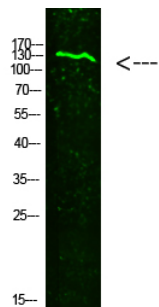
Protein Information

| | |
|--------------------------|--|
| Name | COL19A1 |
| Function | May act as a cross-bridge between fibrils and other extracellular matrix molecules. Involved in skeletal myogenesis in the developing esophagus. May play a role in organization of the pericellular matrix or the sphinteric smooth muscle. |
| Cellular Location | Secreted, extracellular space, extracellular matrix |
| Tissue Location | Localized to vascular, neuronal, mesenchymal, and some epithelial basement membrane zones in umbilical cord |

Background

May act as a cross-bridge between fibrils and other extracellular matrix molecules. Involved in skeletal myogenesis in the developing esophagus. May play a role in organization of the pericellular matrix or the sphinteric smooth muscle.

Images



Western Blot analysis of HELA cells using primary antibody diluted at 1:2000(4°C overnight). Secondary antibody : Goat Anti-rabbit IgG IRDye 800(diluted at 1:5000, 25°C, 1 hour)

Please note: All products are 'FOR RESEARCH USE ONLY. NOT FOR USE IN DIAGNOSTIC OR THERAPEUTIC PROCEDURES'.