

BPIL1 Antibody (N-term)

Purified Rabbit Polyclonal Antibody (Pab)

Catalog # AP7427a

Product Information

Application	WB, E
Primary Accession	Q8N4F0
Reactivity	Human
Host	Rabbit
Clonality	Polyclonal
Isotype	Rabbit IgG
Clone Names	RB17728
Calculated MW	49172
Antigen Region	85-115

Additional Information

Gene ID	80341
Other Names	BPI fold-containing family B member 2, Bactericidal/permeability-increasing protein-like 1, BPI-like 1, Long palate, lung and nasal epithelium carcinoma-associated protein 2, RYSR, BPIFB2, BPIL1, C20orf184, LPLUNC2
Target/Specificity	This BPIL1 antibody is generated from rabbits immunized with a KLH conjugated synthetic peptide between 85-115 amino acids from the N-terminal region of human BPIL1.
Dilution	WB~~1:1000 E~~Use at an assay dependent concentration.
Format	Purified polyclonal antibody supplied in PBS with 0.09% (W/V) sodium azide. This antibody is prepared by Saturated Ammonium Sulfate (SAS) precipitation followed by dialysis against PBS.
Storage	Maintain refrigerated at 2-8°C for up to 2 weeks. For long term storage store at -20°C in small aliquots to prevent freeze-thaw cycles.
Precautions	BPIL1 Antibody (N-term) is for research use only and not for use in diagnostic or therapeutic procedures.

Protein Information

Name	BPIFB2
Synonyms	BPIL1, C20orf184, LPLUNC2
Cellular Location	Secreted.

Tissue Location

Highly expressed in tonsils, especially in hypertrophic tonsils. Detected at very low levels in fetal liver

Background

BPIL1 is a member of the lipid transfer/lipopolysaccharide binding protein (LT/LBP) family. This protein is highly expressed in hypertrophic tonsils.

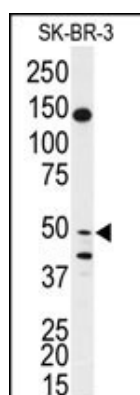
References

Clark H.F., Gurney A.L., Abaya E. *Genome Res.* 13:2265-2270(2003)

Deloukas P., Matthews L.H. *Nature* 414:865-871(2001)

Mulero J.J., Boyle B.J., Bradley S. *Immunogenetics* 54:293-300(2002)

Images



Please note: All products are 'FOR RESEARCH USE ONLY. NOT FOR USE IN DIAGNOSTIC OR THERAPEUTIC PROCEDURES'.