

# NMUR2 Polyclonal Antibody

Catalog # AP74281

## Product Information

---

<b>Application</b>	WB, E
<b>Primary Accession</b>	<a href="#">Q9GZQ4</a>
<b>Reactivity</b>	Human, Rat, Mouse
<b>Host</b>	Rabbit
<b>Clonality</b>	Polyclonal
<b>Calculated MW</b>	47696

## Additional Information

---

<b>Gene ID</b>	56923
<b>Other Names</b>	Neuromedin-U receptor 2 (NMU-R2) (G-protein coupled receptor FM-4) (G-protein coupled receptor TGR-1)
<b>Dilution</b>	WB~~WB 1:500-2000, ELISA 1:10000-20000 E~~N/A
<b>Format</b>	Liquid in PBS containing 50% glycerol, 0.5% BSA and 0.09% (W/V) sodium azide.
<b>Storage Conditions</b>	-20°C

## Protein Information

---

<b>Name</b>	NMUR2
<b>Synonyms</b>	NMU2R, TGR1
<b>Function</b>	Receptor for the neuromedin-U and neuromedin-S neuropeptides.
<b>Cellular Location</b>	Cell membrane; Multi-pass membrane protein.
<b>Tissue Location</b>	Predominantly expressed in the CNS, particularly in the medulla oblongata, pontine reticular formation, spinal cord, and thalamus. High level in testis whereas lower levels are present in a variety of peripheral tissues including the gastrointestinal tract, genitourinary tract, liver, pancreas, adrenal gland, thyroid gland, lung, trachea, spleen and thymus.

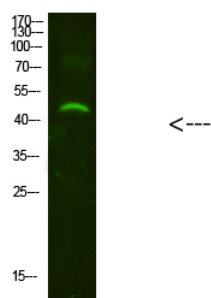
## Background

---

Receptor for the neuromedin-U and neuromedin-S neuropeptides.

## Images

---



Western Blot analysis of mouse-brain cells using primary antibody diluted at 1:2000(4°C overnight). Secondary antibody : Goat Anti-rabbit IgG IRDye 800( diluted at 1:5000, 25°C, 1 hour)

Please note: All products are 'FOR RESEARCH USE ONLY. NOT FOR USE IN DIAGNOSTIC OR THERAPEUTIC PROCEDURES'.