

Maspin Polyclonal Antibody

Catalog # AP74282

Product Information

Application	WB
Primary Accession	P36952
Reactivity	Human, Mouse, Rat
Host	Rabbit
Clonality	Polyclonal
Calculated MW	42100

Additional Information

Gene ID	5268
Other Names	Serpin B5 (Maspin) (Peptidase inhibitor 5) (PI-5)
Dilution	WB~~WB 1:500-2000, ELISA 1:10000-20000
Format	Liquid in PBS containing 50% glycerol, 0.5% BSA and 0.09% (W/V) sodium azide.
Storage Conditions	-20°C

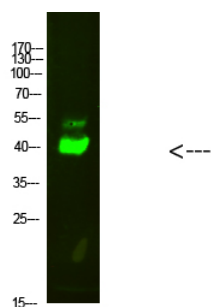
Protein Information

Name	SERPINB5
Synonyms	PI5
Function	Tumor suppressor. It blocks the growth, invasion, and metastatic properties of mammary tumors. As it does not undergo the S (stressed) to R (relaxed) conformational transition characteristic of active serpins, it exhibits no serine protease inhibitory activity.
Cellular Location	Secreted, extracellular space.
Tissue Location	Normal mammary epithelial cells.

Background

Tumor suppressor. It blocks the growth, invasion, and metastatic properties of mammary tumors. As it does not undergo the S (stressed) to R (relaxed) conformational transition characteristic of active serpins, it exhibits no serine protease inhibitory activity.

Images



Western Blot analysis of 293T cells using primary antibody diluted at 1:2000(4°C overnight). Secondary antibody : Goat Anti-rabbit IgG IRDye 800(diluted at 1:5000, 25°C, 1 hour)

Please note: All products are 'FOR RESEARCH USE ONLY. NOT FOR USE IN DIAGNOSTIC OR THERAPEUTIC PROCEDURES'.