

# Collagen I Polyclonal Antibody

Catalog # AP74317

## Product Information

---

<b>Application</b>	WB, E
<b>Primary Accession</b>	<a href="#">P08123</a>
<b>Reactivity</b>	Human, Mouse, Rat
<b>Host</b>	Rabbit
<b>Clonality</b>	Polyclonal
<b>Calculated MW</b>	129314

## Additional Information

---

<b>Gene ID</b>	1278
<b>Other Names</b>	Collagen alpha-2(I) chain (Alpha-2 type I collagen)
<b>Dilution</b>	WB~~WB 1:500-2000, ELISA 1:10000-20000 E~~N/A
<b>Format</b>	Liquid in PBS containing 50% glycerol, 0.5% BSA and 0.09% (W/V) sodium azide.
<b>Storage Conditions</b>	-20°C

## Protein Information

---

<b>Name</b>	COL1A2
<b>Function</b>	Type I collagen is a member of group I collagen (fibrillar forming collagen).
<b>Cellular Location</b>	Secreted, extracellular space, extracellular matrix {ECO:0000255 PROSITE-ProRule:PRU00793}
<b>Tissue Location</b>	Forms the fibrils of tendon, ligaments and bones. In bones the fibrils are mineralized with calcium hydroxyapatite

## Background

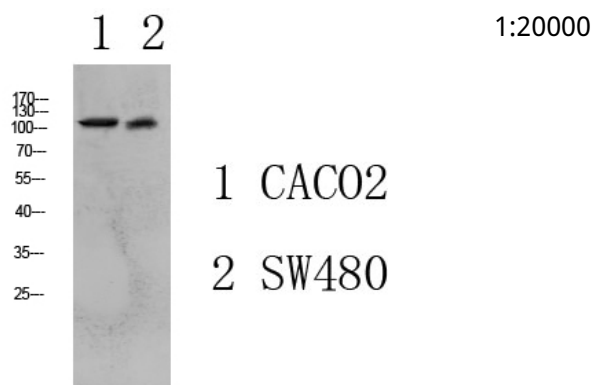
---

Type I collagen is a member of group I collagen (fibrillar forming collagen).

## Images

---

Western blot analysis of various lysate, antibody was diluted at 1000. Secondary antibody was diluted at



Please note: All products are 'FOR RESEARCH USE ONLY. NOT FOR USE IN DIAGNOSTIC OR THERAPEUTIC PROCEDURES'.